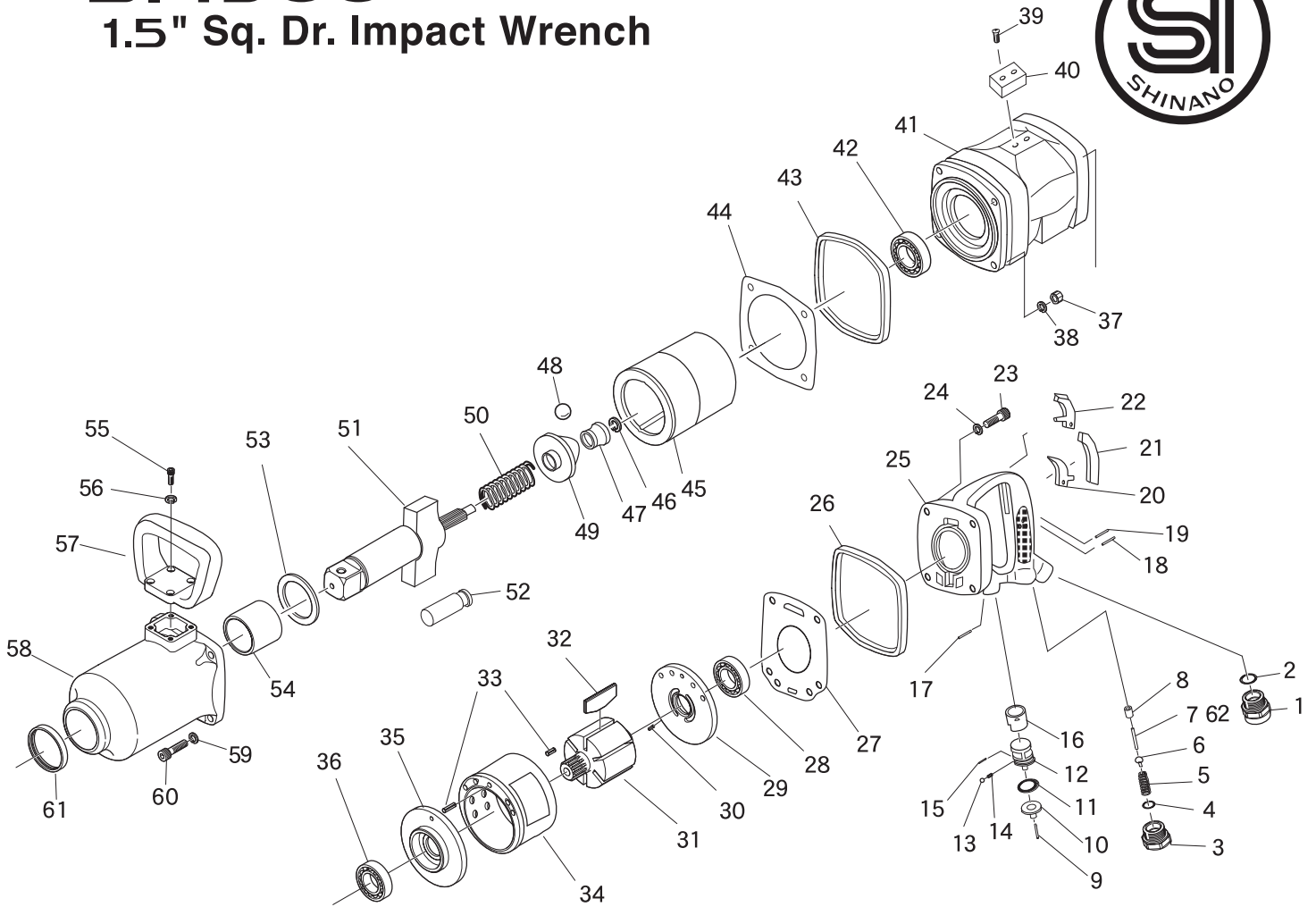


# SI-1900

## 1.5" Sq. Dr. Impact Wrench



| Ref. No. | Parts No. | Description                                  | Q'ty | Ref. No. | Parts No. | Description                               | Q'ty |
|----------|-----------|--|------|----------|-----------|---|------|
| 1        | 1901-46   | Inlet Bushing                                | 1    | 32       | 1903-30   | Rotor Blade                               | 6    |
| 2        | P-20      | O-Ring                                       | 1    | 33       | 40-20     | Roll Pin                                  | 2    |
| 3        | 1902-48   | Valve Plug                                   | 1    | 34       | 1903-31A  | Cylinder Assembly (incl.40-20)            | 1    |
| 4        | P-20      | O-Ring                                       | 1    | 35       | 1903-28   | Front Plate                               | 1    |
| 5        | 1902-44   | Valve Spring                                 | 1    | 36       | 1903-27   | Ball Bearing                              | 1    |
| 6        | 1901-43   | Valve  | 1    | 37       | N1-M80    | Nut                                       | 4    |
| 7        | 1902-42   | Valve Pin (for Outside Lever)                | 1    | 38       | 1900-23   | Washer                                    | 4    |
| 8        | 1901-41   | Valve Bushing                                | 1    | 39       | 1903-80   | Cap Screw                                 | 2    |
| 9        | 30-24     | Roll Pin                                     | 1    | 40       | 1903-79   | Exhaust Rubber                            | 1    |
| 10       | 1903-58   | Reverse Lever                                | 1    | 41       | 1903-25A  | Motor Housing                             | 1    |
| 11       | P-16      | O-Ring                                       | 1    | 42       | 1903-38   | Ball Bearing                              | 1    |
| 12       | 1901-52A  | Reverse Valve Assy (incl.30-8)               | 1    | 43       | 1903-17   | Front Housing Band                        | 1    |
| 13       | SB-40     | Steel Ball                                   | 1    | 44       | 1903-16   | Gasket                                    | 1    |
| 14       | 1901-53   | Spring                                       | 1    | 45       | 1903-11   | Hammer Cage                               | 1    |
| 15       | 30-8      | Roll Pin                                     | 1    | 46       | 1903-9    | Retainer Ring                             | 1    |
| 16       | 1901-51   | Reverse Valve Bushing                        | 1    | 47       | 1903-15   | Ball Guide                                | 1    |
| 17       | 40-30     | Roll Pin                                     | 1    | 48       | 1903-13   | Steel Ball                                | 1    |
| 18       | 1901-63B  | Needle Pin                                   | 1    | 49       | 1903-14   | Cam                                       | 1    |
| 19       | 40-26     | Roll Pin                                     | 1    | 50       | 1903-10   | Cam Spring                                | 1    |
| 20       | 1901-60B  | Inside Trigger                               | 1    | 51       | 1903-8    | Anvil                                     | 1    |
| 21       | 1901-61   | Outside Plug                                 | 1    | 52       | 1903-12   | Hammer Pin                                | 2    |
| 22       | 1902-60   | Out Side Trigger                             | 1    | 53       | 1903-5    | Thrust Washer                             | 1    |
| 23       | Z-M80-300 | Cap Screw                                    | 4    | 54       | 1903-4    | Anvil Bushing                             | 1    |
| 24       | 1900-23   | Washer                                       | 4    | 55       | Z-M60-180 | Cap Screw                                 | 4    |
| 25       | 1903-40A  | Frame Handle Assembly (incl.1901-41,1901-51) | 1    | 56       | HSW-60    | Washer                                    | 4    |
| 26       | 1903-37   | Rear Housing Band                            | 1    | 57       | 1903-18   | Dead Handle                               | 1    |
| 27       | 1902-36   | Gasket                                       | 1    | 58       | 1903-3A   | Hammer Case Assembly (incl.1903-4,1903-2) | 1    |
| 28       | 6205      | Ball Bearing                                 | 1    | 59       | 1900-23   | Washer                                    | 4    |
| 29       | 1902-33A  | Rear End Plate Assembly (incl.1902-34)       | 1    | 60       | 1903-22   | Cap Screw                                 | 4    |
| 30       | 1902-34   | Roll Pin                                     | 1    | 61       | 1903-2    | Oil Seal                                  | 1    |
| 31       | 1903-29   | Rotor  | 1    | 62       | 1902-42B  | Valve Pin (for Inside Lever)              | 1    |