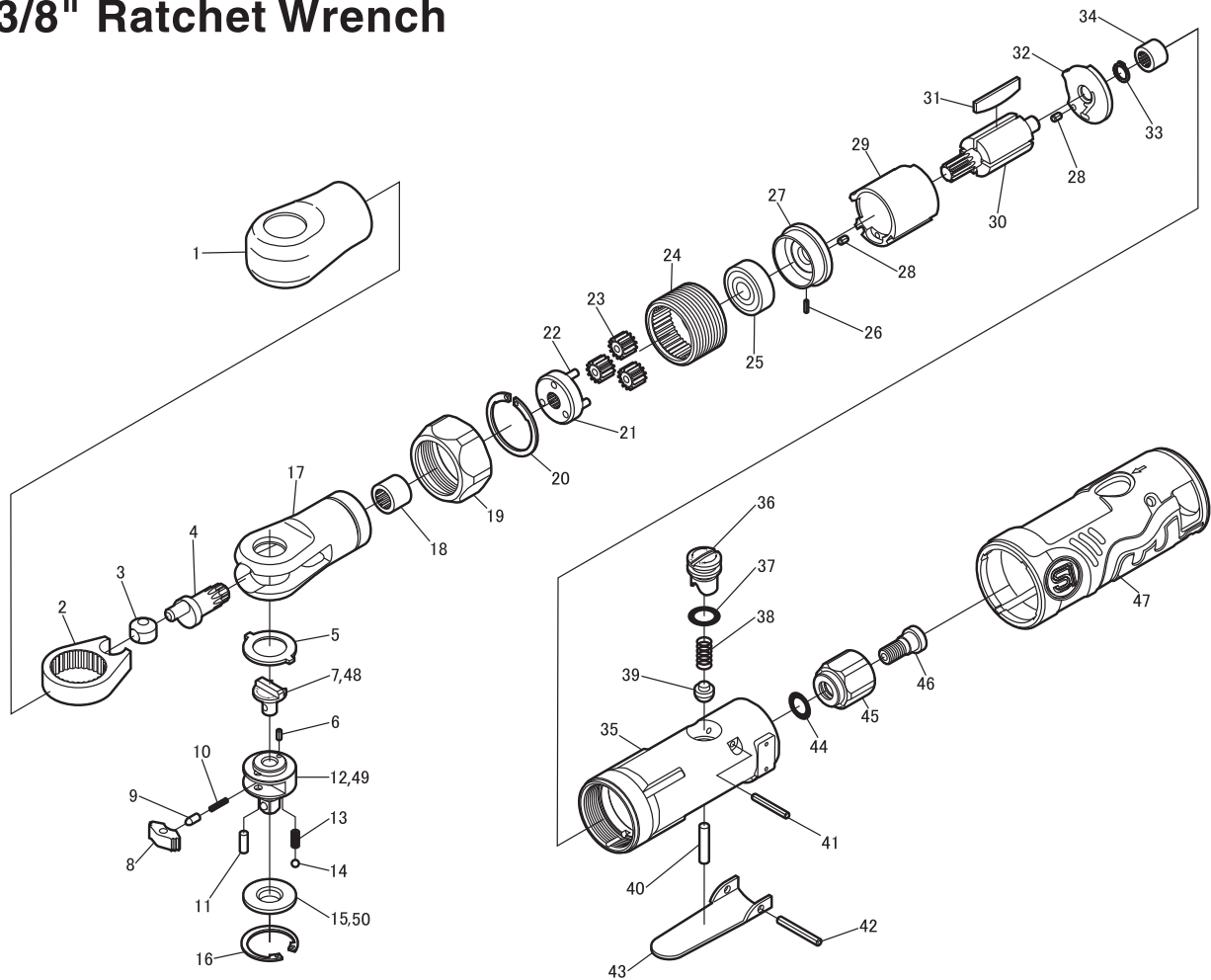


SI-1207EX 1/4" Ratchet Wrench

SI-1208EX 3/8" Ratchet Wrench



| Ref. No. | Parts No. | Description | Q'ty | Ref. No. | Parts No. | Description | Q'ty |
|----------|-----------|--|------|----------|-----------|-----------------------------------|------|
| 1 | 310G-5B | Boot | 1 | 26 | 15-6 | Roll Pin (1.5ø-6mm) | 1 |
| 2 | 310-3 | Yoke | 1 | 27 | 310-5 | Front Plate | 1 |
| 3 | 310-8 | Drive Bushing | 1 | 28 | 25-4 | Roll Pin (2.5ø-4mm) | 2 |
| 4 | 310C-1 | Crank Shaft | 1 | 29 | 330-17 | Cylinder | 1 |
| 5 | 310-5A | Washer | 1 | 30 | 310-11 | Rotor | 1 |
| 6 | 20-5 | Roll Pin (2ø-5mm) | 1 | 31 | 330-16 | Rotor Blade | 4 |
| 7 | 310-17 | Reverse Lever for 1/4" Sq. Anvil | 1 | 32 | 310-4 | Rear Plate | 1 |
| 8 | 310-9A | Ratchet Pawl | 1 | 33 | JS-6.35 | Retaining Ring | 1 |
| 9 | 310-16 | Reverse Pin | 1 | 34 | KE-45 | Needle Bearing | 1 |
| 10 | 310-34 | Reverse Spring | 1 | 35 | 310G-1 | Motor Housing incl. Bush (310-1S) | 1 |
| 11 | 310-24 | Dowel Pin | 1 | 36 | 310KD-5 | Air Regulator | 1 |
| 12 | 310-6 | 1/4" Sq. Anvil | 1 | 37 | S-9 | O-Ring | 1 |
| 13 | 310B-33 | Thrust Washer Spring | 2 | 38 | 670-49 | Valve Spring | 1 |
| 14 | SB-30 | Steel Ball | 2 | 39 | 300-10 | Valve | 1 |
| 15 | 310-23 | Thrust Washer for 1/4" Sq. Anvil | 1 | 40 | 310-4S | Valve Pin | 1 |
| 16 | 310-60 | Retaining Ring | 1 | 41 | 25-20 | Roll Pin (2.5ø-20mm) | 1 |
| 17 | 310D-2 | Ratchet Housing | 1 | 42 | 30-24 | Roll Pin (3ø-24mm) | 1 |
| 18 | HK0910 | Needle Bearing | 1 | 43 | 312-12T | Throttle Lever | 1 |
| 19 | 1091C-17 | Lock Ring | 1 | 44 | P-8 | O-Ring | 1 |
| 20 | GV-24 | Retaining Ring | 1 | 45 | 310G-3 | Inlet Bushing | 1 |
| 21 | 310-2 | Planet Cage incl. Planet Pins (310-19x3) | 1 | 46 | 310G-4B | Retaining Screw | 1 |
| 22 | 310-19 | Planet Pin | 3 | 47 | 310G-2SI | Housing Cover | 1 |
| 23 | 310-12 | Planet Gear | 3 | ★ 48 | 310S-17 | Reverse Lever for 3/8" Sq. Anvil | 1 |
| 24 | 310-21 | Internal Gear | 1 | ★ 49 | 310S-6 | 3/8" Sq. Anvil | 1 |
| 25 | 608ZZ | Ball Bearing | 1 | ★ 50 | 310S-23 | Thrust Washer for 3/8" Sq. Anvil | 1 |