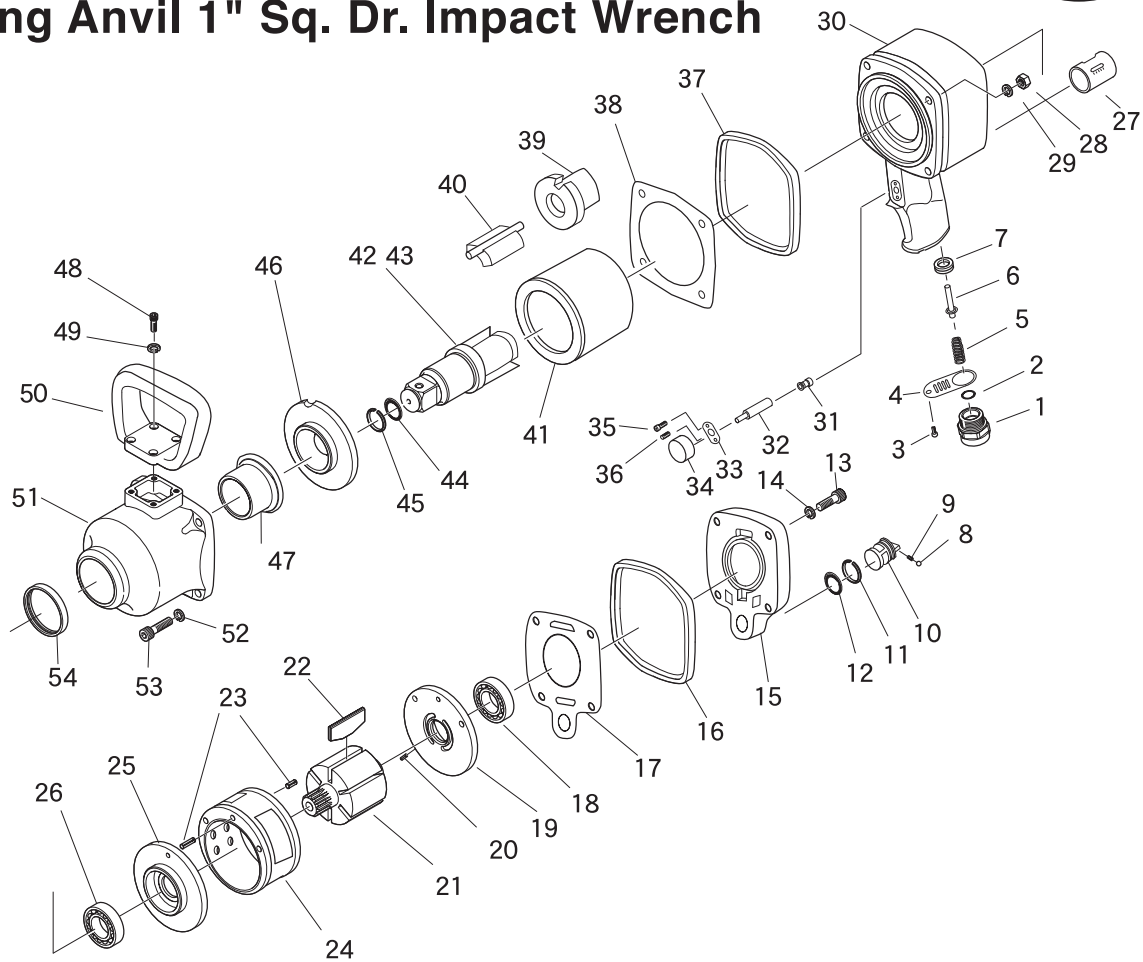


SI-1860

1" Sq. Dr. Impact Wrench

SI-1866

Long Anvil 1" Sq. Dr. Impact Wrench



Ref. No.	Parts No.	Description	Q'ty	Ref. No.	Parts No.	Description	Q'ty
1	1900-46	Inlet Bushing	1	29	1900-23	Washer	4
2	S-20	O-Ring	1	30	1900-25A	Motor Case Assembly (incl. 1900-41, 1900-66)	1
3	A-M40---80	Cap Screw	1	31	1900-41	Valve Bushing	1
4	1900-50	Deflector	1	32	1900-42	Valve Pin	1
5	1900-44	Valve Spring	1	33	1900-68	Throttle Cover	1
6	1900-43	Valve	1	34	1900-60	Throttle Lever	1
7	1900-48	Valve Seat	1	35	E-M40---100	Cap Screw	2
8	SB-40	Steel Ball	1	36	ROM40---50	Set Screw	1
9	1900-75	Spring	1	37	1900-17	Front Housing Band	1
10	1900-56	Regulator	1	38	1900-16	Gasket	1
11	GV-22	Snap ring	1	39	1900-14	Cam	1
12	P-16	O-Ring	1	40	1900-12	Hammer Dog	1
13	Z-M80---250	Cap Screw	4	41	1900-11	Hammer Frame	1
14	1900-71	Washer	4	42	1900-8A	Anvil Assembly (incl. 1900-9, 1900-10)	1
15	1900-70	Housing Cap	1	★43	1900-8BA	Long Anvil Assembly (incl. 1900-9, 1900-10)	1
16	1900-37	Rear Housing Band	1	44	1900-10	O-Ring	1
17	1900-36	Gasket	1	45	1900-9	Socket Retainer Ring	1
18	6204	Ball Bearing	1	46	1900-6	Side Plate	1
19	1900-33A	Rear End Plate Assembly (incl. 40-10)	1	47	1900-4	Anvil Bushing	1
20	40-10	Roll Pin (4φ-10mm)	1	48	Z-M60---180	Cap Screw	4
21	1900-29	Rotor	1	49	HSW-60	Washer	4
22	1900-30	Rotor blade	6	50	1900-18	Dead Handle	1
23	1900-32	Roll Pin	2	51	1900-3A	Hammer Case Assembly (incl. 1900-2, 1900-4)	1
24	1900-31A	Cylinder Assembly (incl. 1900-32)	1	52	HSW-80	Washer	4
25	1900-28	Front Plate	1	53	Z-M80---370	Cap Screw	4
26	6205-Z	Ball Bearing	1	54	1900-2	Oil Seal	1
27	1900-66	Adjust Valve Bushing	1				
28	N1-M80	Nut	4				

★ For SI-1866

Printed in Japan

Jul. 2012