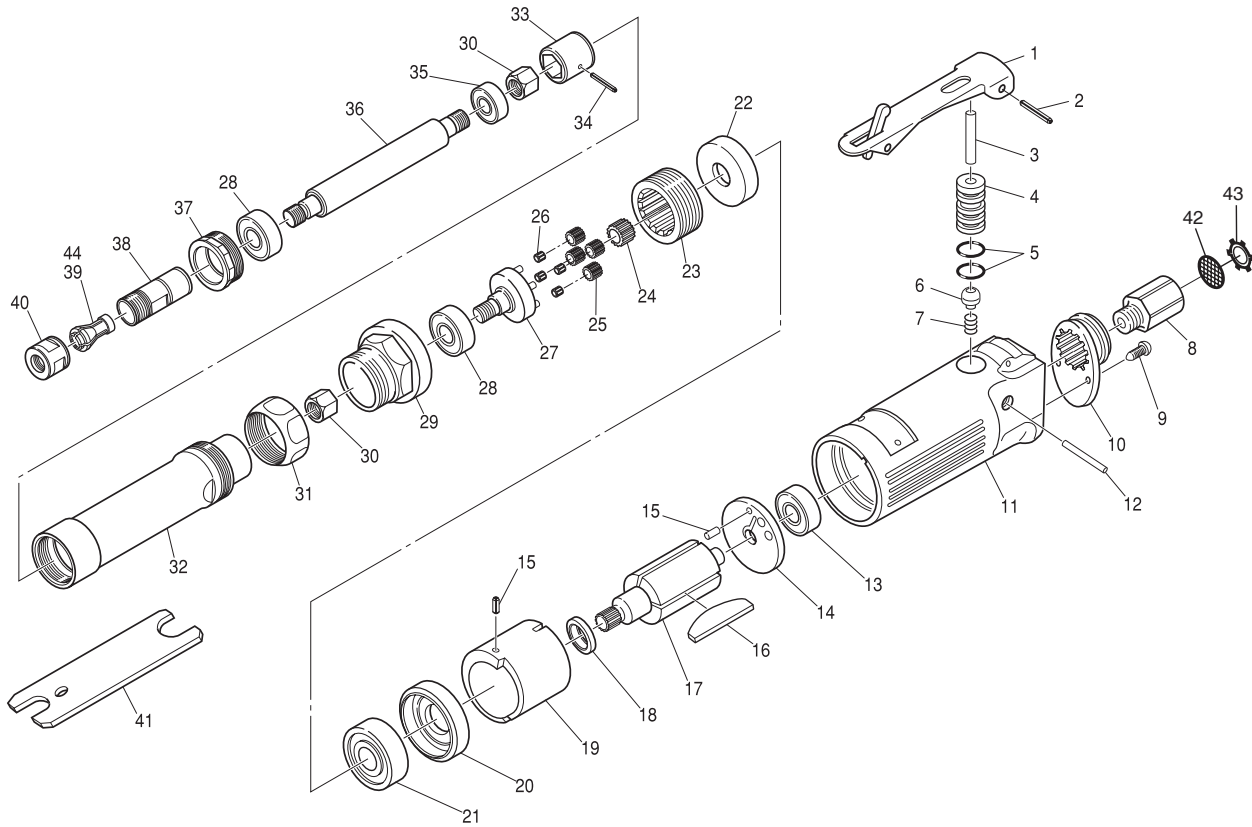


# SI-2023

## Extended Die Grinder



Ref. No.	Parts No.	Description	Q'ty	Ref. No.	Parts No.	Description	Q'ty
1	350-2L	Throttle Lever	1	24	176L-5	Spacer	1
2	30-24	Roll Point (3ø-24mm)	1	25	176L-4	Planet Gear	4
3	190-33	Valve Pin	1	26	1300-45C-4	Cage incl. Pins (1300-45C4Ax5)	4
4	175-13	Valve Bushing	1	27	176L-3	Reduction Spindle incl. Needle Rollers (3000-15-8x4)	1
5	P-10	O-Ring	2	28	6001ZZ	Ball Bearing	2
6	300-10	Valve	1	29	176L-7	Motor Clamp Nut	1
7	670-49	Valve Spring	1	30	132-16	Drive Nut	2
8	985-10	Inlet Bushing incl. Screen & Retainer	1	31	132-14	Coupling Nut	1
9	JBM30---80	Screw	2	32	132-6	Extension Housing	1
10	120-11	Deflector	1	33	132-39	Coupling	1
11	175-10	Motor Housing	1	34	20-20	Roll Pin (2ø-20mm)	1
12	200-31	Pin	1	35	EE3ZZ	Ball Bearing	1
13	608ZZ	Ball Bearing	1	36	132-7	Extension Shaft	1
14	175-14	Rear Plate	1	37	132-8	Spindle Nut	1
15	25-5	Roll Pin (2.5ø-5mm)	2	38	130-15	Spindle	1
16	170-5	Rotor Blade	4	39	330-19	6mm Collet	1
17	176L-1	Rotor	1	40	350-23	Collet Nut	1
18	170-9	Spacer	1	41	350-28	Spanner Wrench (14x19mm)	2
19	170-12	Cylinder	1	42	680-28A	Screen	1
20	170-3	Front Plate	1	43	CRTW-12	Retainer	1
21	6201ZZ	Ball Bearing	1	44	330-24	1/4" Collet	1
22	176L-6	Spacer	1				
23	176L-2	Internal Gear	1				