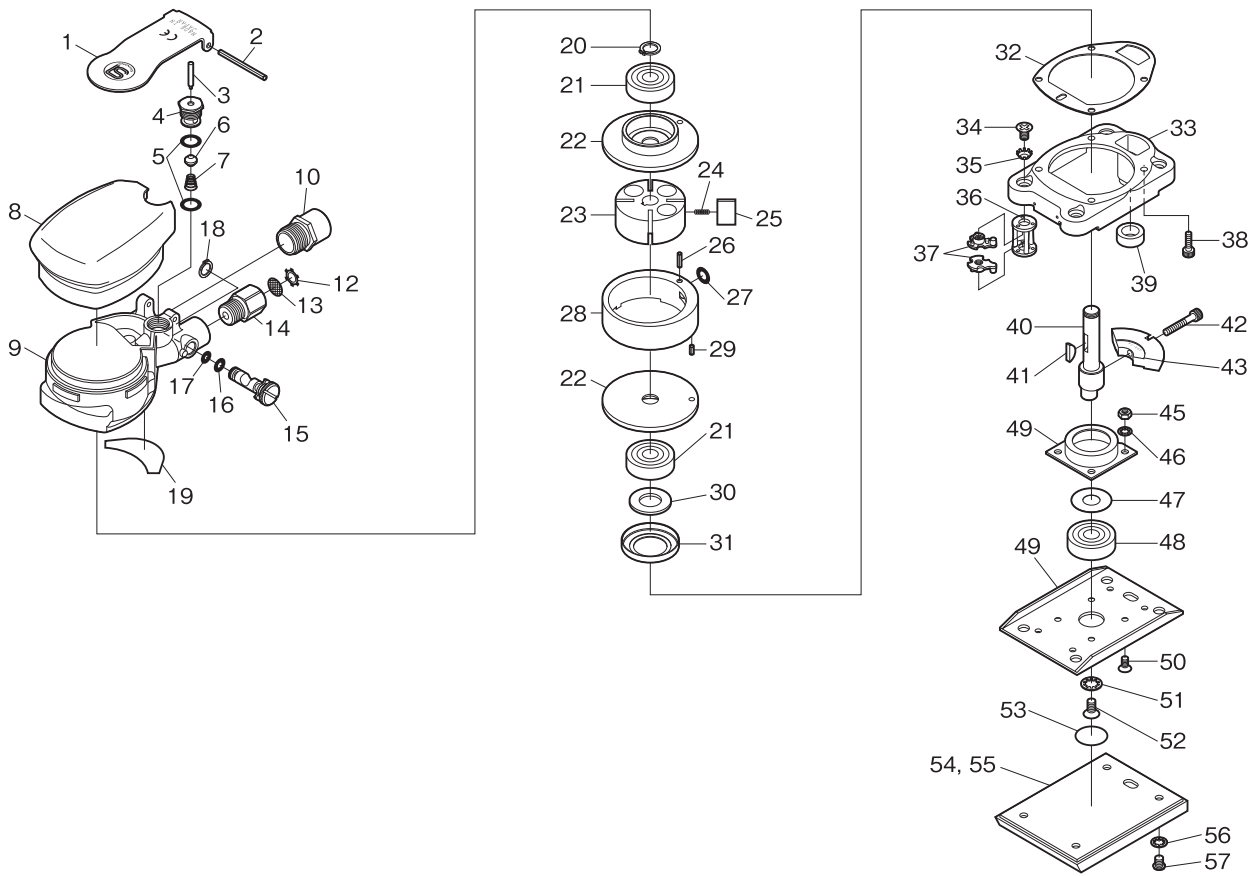


SI-3003A(M)

Orbital Sander



Ref. No.	Parts No.	Description	Q'ty	Ref. No.	Parts No.	Description	Q'ty
1	1040-11	Throttle Lever	1	30	570-1	Felt Ring	1
2	30-40	Roll Pin(4ø-30mm)	1	31	481-9	Seal Cover	1
3	455-11	Valve Pin	1	32	490-13	Motor Gasket	1
4	490-4	Valve Body	1	33	490-15B	Motor Retainer	1
5	S-10	O-Ring	2	34	E-M50--80	Screw	4
6	455-21	Valve	1	35	CT-50	Washer	4
7	490-20	Valve Spring	1	36	1040-22	Plastic Support	4
8	490C-2	Housing Cover	1	37	1040-23	Metal Fitting	8
9	490C-1	Motor Housing	1	38	Z-632--127	Cap Screw	4
10	1040-18AC	Muffler Assy	1	39	490W-1	Felt	1
12	CRTW-12	Retainer	1	40	490-11	Crank Shaft	1
13	680-28A	Screen	1	41	480-23	Key	1
14	180-1	Inlet Bushing	1	42	Z-M40--250	Cap Screw	1
15	485-4	Air Regulator	1	43	490-16	Lower Weight	1
16	P-5	O-Ring	1	44	490-18	Shoe Bearing Housing	1
17	P-4	O-Ring	1	45	N1-M40	Nut	4
18	JS-8	Retainer Ring	1	46	AT-40	Washer	4
19	490-54	Seal	1	47	481-10	Spacer (Brass)	1
20	JS-10	Retainer Ring	1	48	6200LLU	Ball Bearing	1
21	6200ZZ	Ball Bearing	2	49	490-19B	Shoe (Square)	1
22	490-53T	Bearing Case	2	50	E-M40--80	Screw	4
23	490-5	Rotor	1	51	AT-70	Washer	1
24	490-1	Blade Spring	2	52	E-M50--100	Screw	1
25	490-6	Rotor Blade	4	53	490-52	Seal (Round)	1
26	25-10	Roll Pin(2.5ø-10mm)	1	54	P-3003	Leather Pad incl. Plate (490-58B)	1
27	P-7	O-Ring	1	★ 55	M-3003	Velcro Pad incl. Plate (490-58B)	1
28	490B-36B	Cylinder	1	56	AT-50	Washer	4
29	25-6	Roll Pin(2.5ø-6mm)	1	57	A-M50--60	Screw	4