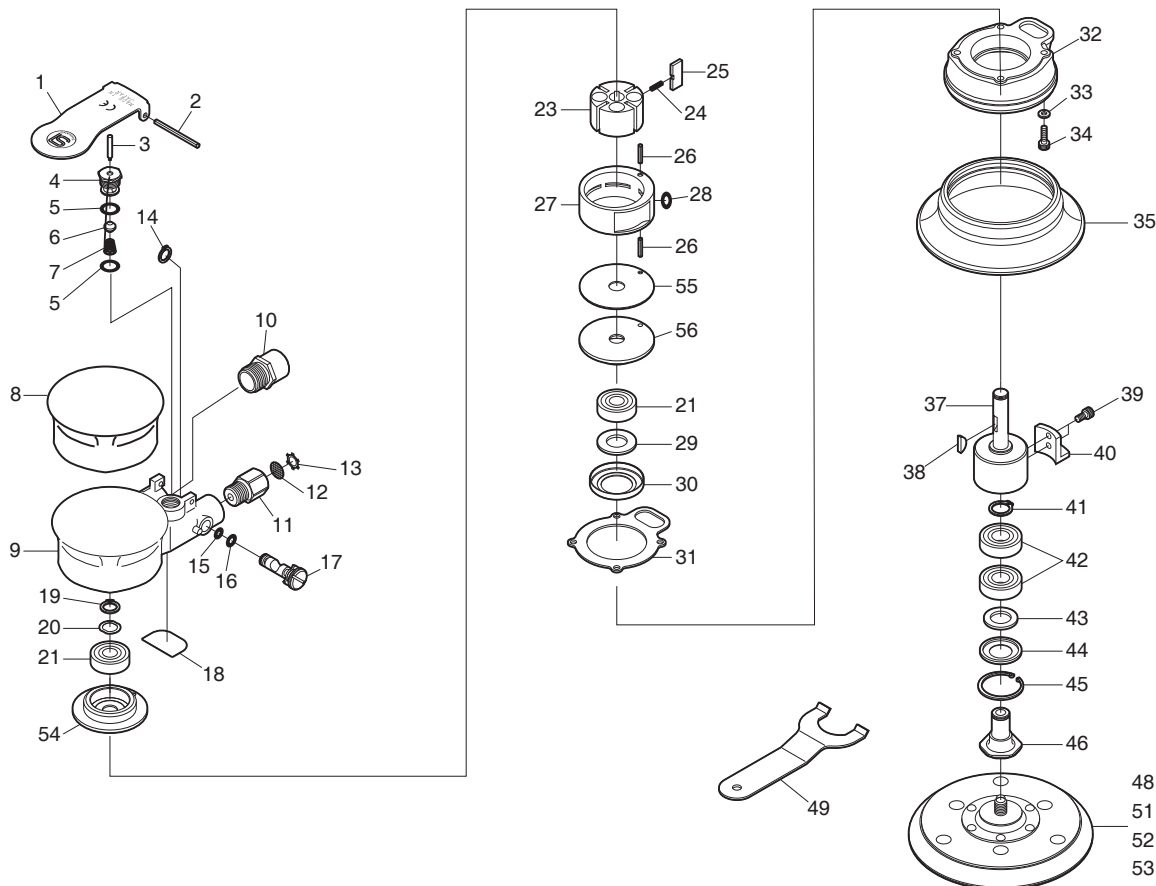


SI-3101(M) 5" Dual Action Sander

SI-3101-6(M) 6" Dual Action Sander



Ref. No.	Parts No.	Description	Q'ty	Ref. No.	Parts No.	Description	Q'ty
1	1040-11	ThrottleLever	1	29	570-1	Felt Ring	1
2	30-40	RollPin(3ø-40mm)	1	30	481-9	Seal Cover	1
3	455-11	ValvePin	1	31	1040-9	Motor Gasket	1
4	490-4	ValveBody	1	32	1041-10	Balancer Cover	1
5	S-10	O-Ring	2	33	1040-19	Washer	4
6	455-21	Valve	1	34	Z-632-127	Cap Screw	4
7	490-20	ValveSpring	1	35	1041-14U5	Pad Cover	1
8	1040-10A	HousingCover	1	37	1041-11	Balancer Shaft	1
9	1040-1	MotorHousing	1	38	480-23	Key	1
10	1040-18AS	MufflerAssy.	1	39	Z-M40-80	Cap Screw	2
11	180-1	InletBushing	1	40	1041-13	Adjust Weight	1
12	680-28A	Screen	1	41	JS-12	Retaining Ring	1
13	CRTW-12	Retainer	1	42	6001LLB	Ball Bearing	2
14	JS-8	RetainingRing	1	43	1041-50	Felt	1
15	P-4	O-Ring	1	44	1041-51	Seal Plate	1
16	P-5	O-Ring	1	45	BO-28	Retaining Ring	1
17	485-4	AirRegulator	1	46	1041-12	Random Shaft	1
18	1040-50	CoverPlate	1	★ 48	M-150H	6" Velcro Pad	1
19	JS-10	RetainingRing	1	49	1041-56	Spanner Wrench	1
20	WW-100	WaveWasher	1	★ 51	P-150H	6" Leather Pad	1
21	6000ZZ	BallBearing	2	☆ 52	M-125H	5" Velcro Pad	1
23	1040-4	Rotor	1	☆ 53	P-125H	5" Leather Pad	1
24	490-1	BladeSpring	2	54	1040-5C	Bearing Case	1
25	1040-17	RotorBlade	4	55	1040-6C	End Plate	1
26	25-14	RollPin(2.5ø-14mm)	2	56	1040-5	End Plate	1
27	1040-2	Cylinder	1				
28	P-7	O-Ring	1				