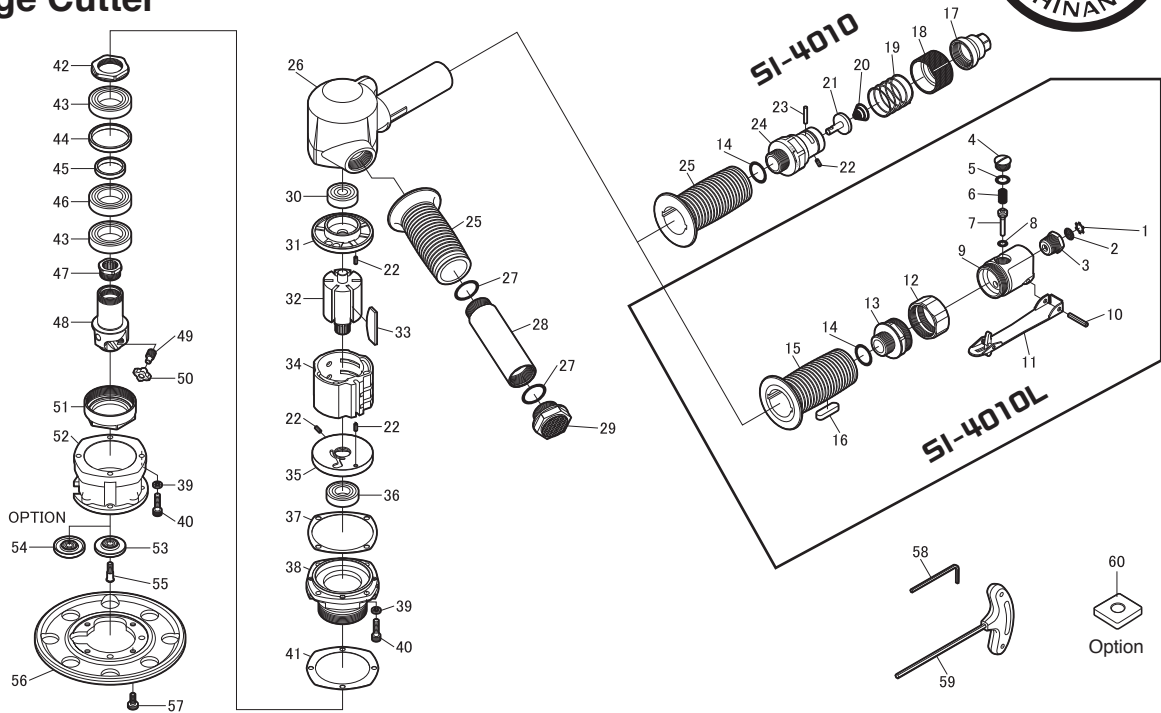


SI-4010 SI-4010L

Edge Cutter



Ref. No.	Parts No.	Description	Q'ty	Ref. No.	Parts No.	Description	Q'ty
4010L				COMMON PARTS			
1	CRTW-12	Retainer	1	22	30-8	Roll Pin(3Ø-8mm)	3
2	680-28A	Screen	1	25	693-21	Handle Cover	1
3	670-22	Inlet Bushing	1	26	693-20	Motor Housing incl. Heli-coil (M5-2D)	1
4	230-68	Valve Screw	1	27	620-28	O-Ring	2
5	P-10	O-Ring	1	28	693-23A	Handle	1
6	230-4	Valve Spring	1	29	693-22A	Exhaust Bushing incl. Silencer (693-28) & Spacer (693-29)	1
7	230-6	Valve Stem	1	30	6200ZZ	Ball Bearing	1
8	P-6	O-Ring	1	31	693-2A	Rear Plate	1
9	693L-4	Valve Housing incl. Bush (230-7)	1	32	693-30	Rotor	1
10	40-25	Roll Pin(4Ø-25mm)	1	33	930B-3	Rotor Blade	6
11	1110RAL-2	Safety Lever	1	34	691-4	Cylinder	1
12	693L-2	Lock Ring	1	35	693-3A	Front Plate	1
13	693L-1	Valve Joint	1	36	16002	Ball Bearing	1
14	991-7	O-Ring	1	37	693-27	Motor Gasket	1
15	693L-3	Handle Cover	1	38	693-8A	Spindle Housing	1
16	693L-5	Toggle Lock	1	39	HSW-50	Washer	8
4010				40	Z-M50--180	Cap Screw	8
14	991-7	O-Ring	1	41	693-26	Shim	1
17	245-29	Inlet Bushing	1	42	693-35	Lock Nut	1
18	245-26	Valve Ring	1	43	6905ZZ	Ball Bearing	2
19	245-27	Valve Ring Spring	1	44	693-13A	Collar	1
20	380-33	Conical Spring	1	45	693-12A	Collar	1
21	245-5	Valve	1	46	6905LLU	Ball Bearing	1
22	30-8	Roll Pin(3Ø-8mm)	1	47	693-4	Coupling	1
23	940-19	Valve Pin	1	48	693-24A	Cutter Holder	1
24	693-1	Valve Housing	1	49	693-15	Clamp Screw	3
25	693-21	Handle Cover	1	50	693-17GS	R3 Carbide Tip	3
				51	693-6	Lock Nut	1
				52	693-9	Outer Case	1
				53	693-5E	Guide Roller (for thickness ≥ 8mm)	1
				55	693-19	Screw	1
				56	693-14A	Base Plate	1
				57	LVM50--120	Cap Screw	4
				58	WRA-3	3mm Allen Wrench	1
				59	WRA-4LB	Allen Wrench T Type	1
				★ 54	693-5	Guide Roller (for thickness ≥ 6mm)	1
				★ 60	693-39GS	C3 Carbide Tip	3