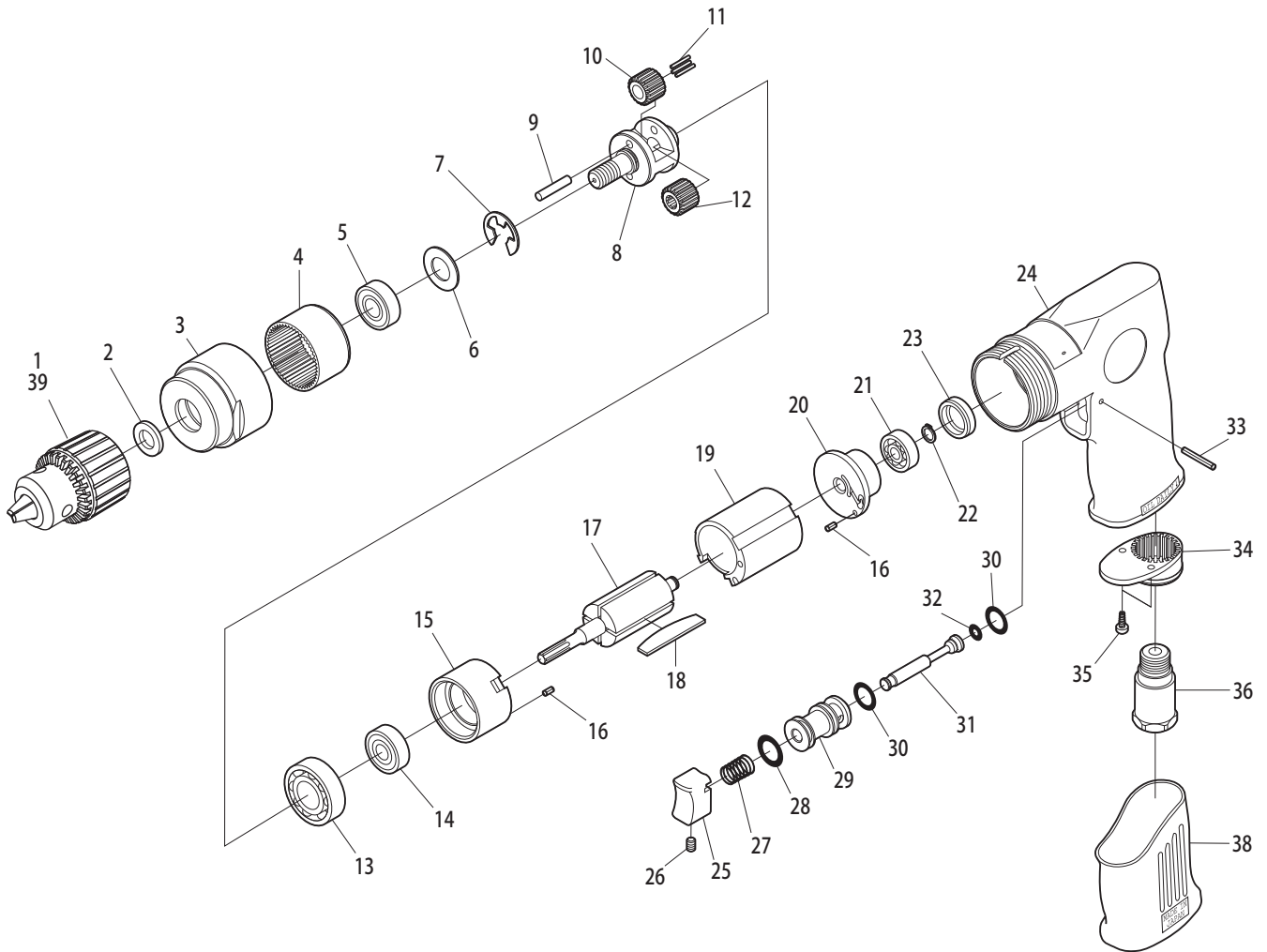


SI-5100A

1/4" Planetary Gear Drill

5,000r.p.m.



| Ref. No. | Parts No. | Description | Q'ty | Ref. No. | Parts No. | Description | Q'ty |
|----------|-----------|------------------------------|------|----------|-----------|-------------------------------------|------|
| 1 | KD-004 | 3/8" Drill Chuck w/Handle KK | 1 | 21 | 626 | Ball Bearing | 1 |
| 2 | 680-7 | Spacer | 1 | 22 | JS-6 | Retaining Ring | 1 |
| 3 | 680-8 | Clamp Nut | 1 | 23 | 680-34 | Bearing Cap | 1 |
| 4 | 680-9 | Internal Gear | 1 | 24 | 120-10ASI | Motor Housing | 1 |
| 5 | EE3ZZ | Ball Bearing | 1 | 25 | 120-18 | Trigger | 1 |
| 6 | 680-22 | Fiber Washer | 1 | 26 | R-M40-60 | Set Screw | 1 |
| 7 | IE-10 | Retaining Ring | 1 | 27 | 120-31 | Valve Spring | 1 |
| 8 | 120-45-1 | Planet Cage | 1 | 28 | P-11 | O-Ring | 1 |
| 9 | 120-45-2 | Planet Pin | 2 | 29 | 120-13 | Valve Bushing | 1 |
| 10 | 120-45-3 | Planet Gear | 2 | 30 | P-10 | O-Ring | 2 |
| 11 | 1500-11-8 | Needle Roller | 22 | 31 | 120-14 | Valve Stem | 1 |
| 12 | 120-45-4 | Pinion Gear | 1 | 32 | P-4 | O-Ring | 1 |
| 13 | 6001 | Ball Bearing | 1 | 33 | 25-20 | Roll Pin (2.5ø-20mm) | 1 |
| 14 | 608ZZ | Ball Bearing | 1 | 34 | 120-11 | Deflector | 1 |
| 15 | 680-4 | Front Plate | 1 | 35 | JBM30-80 | Screw | 2 |
| 16 | 25-5 | Roll Pin (2.5ø-5mm) | 2 | 36 | 120-17 | Inlet Bushing | 1 |
| 17 | 680-5 | Rotor | 1 | *37 | KK | Chuck Handle for KD-003A & KD-004 | 1 |
| 18 | 350-16 | Rotor Blade | 4 | 38 | 120-35 | Housing Cover | 1 |
| 19 | 680-1 | Cylinder | 1 | ◆39 | LX10 | 3/8" Cap. Keyless Chuck (3/8" Thd.) | |
| 20 | 680-2 | Rear Plate | 1 | | | | |