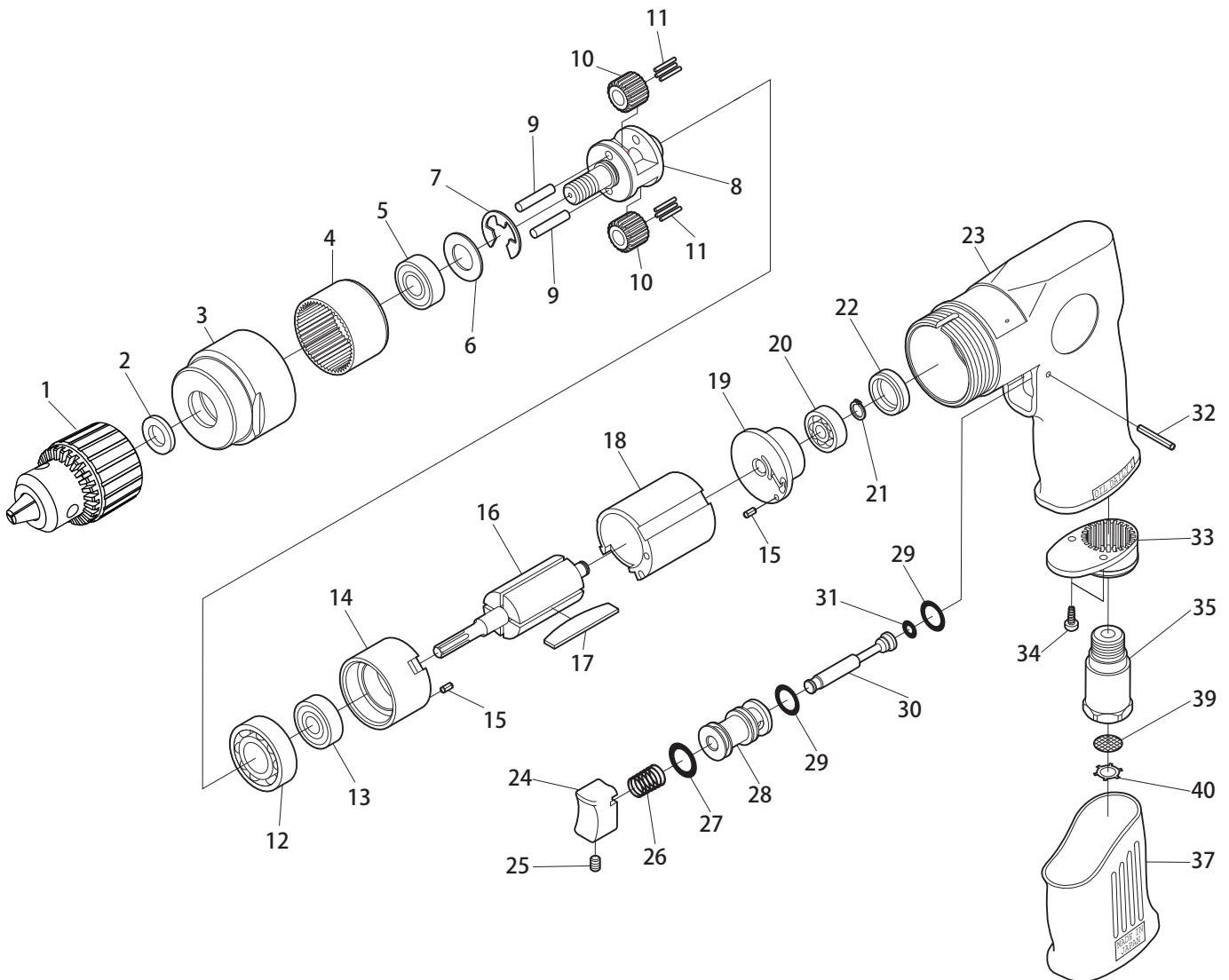


SI-5300A

3/8" Planetary Gear Drill



| Ref. No. | Parts No. | Description | Q'ty | Ref. No. | Parts No. | Description | Q'ty |
|----------|-----------|------------------------------|------|----------|-----------|-------------------------------------|------|
| 1 | KD-004 | 3/8" Drill Chuck w/Handle KK | 1 | 21 | JS-6 | Retaining Ring | 1 |
| 2 | 680-7 | Spacer | 1 | 22 | 680-34 | Bearing Cap | 1 |
| 3 | 680-8 | Clamp Nut | 1 | 23 | 120-10ASI | Motor Housing | 1 |
| 4 | 680-9 | Internal Gear | 1 | 24 | 120-18 | Trigger | 1 |
| 5 | EE3ZZ | Ball Bearing | 1 | 25 | R-M40-60 | Set Screw | 1 |
| 6 | 680-22 | Fiber Washer | 1 | 26 | 120-31 | Valve Spring | 1 |
| 7 | IE-10 | Retaining Ring | 1 | 27 | P-11 | O-Ring | 1 |
| 8 | 680-3 | Planet Cage | 1 | 28 | 120-13 | Valve Bushing | 1 |
| 9 | 680-17 | Planet Pin | 2 | 29 | P-10 | O-Ring | 2 |
| 10 | 680-6 | Planet Gear | 2 | 30 | 120-14 | Valve Stem | 1 |
| 11 | 1500-11-8 | Needle Roller | 22 | 31 | P-4 | O-Ring | 1 |
| 12 | 6001 | Ball Bearing | 1 | 32 | 25-20 | Roll Pin (2.5 ϕ -20mm) | 1 |
| 13 | 608ZZ | Ball Bearing | 1 | 33 | 120-11 | Deflector | 1 |
| 14 | 680-4 | Front Plate | 1 | 34 | JBM30-80 | Screw | 2 |
| 15 | 25-5 | Roll Pin (2.5 ϕ -5mm) | 2 | 35 | 120-17 | Inlet Bushing | 1 |
| 16 | 680-5 | Rotor | 1 | * 36 | KK | Chuck Handle for KD-003A & KD-004 | 1 |
| 17 | 350-16 | Rotor Blade | 4 | 37 | 120-35 | Housing Cover | 1 |
| 18 | 680-1 | Cylinder | 1 | *◆ 38 | LX10 | 3/8" Cap, Keyless Chuck (3/8" Thd.) | |
| 19 | 680-2 | Rear Plate | 1 | 39 | 680-28A | Screen | 1 |
| 20 | 626 | Ball Bearing | 1 | 40 | CRTW-12 | Retainer | 1 |