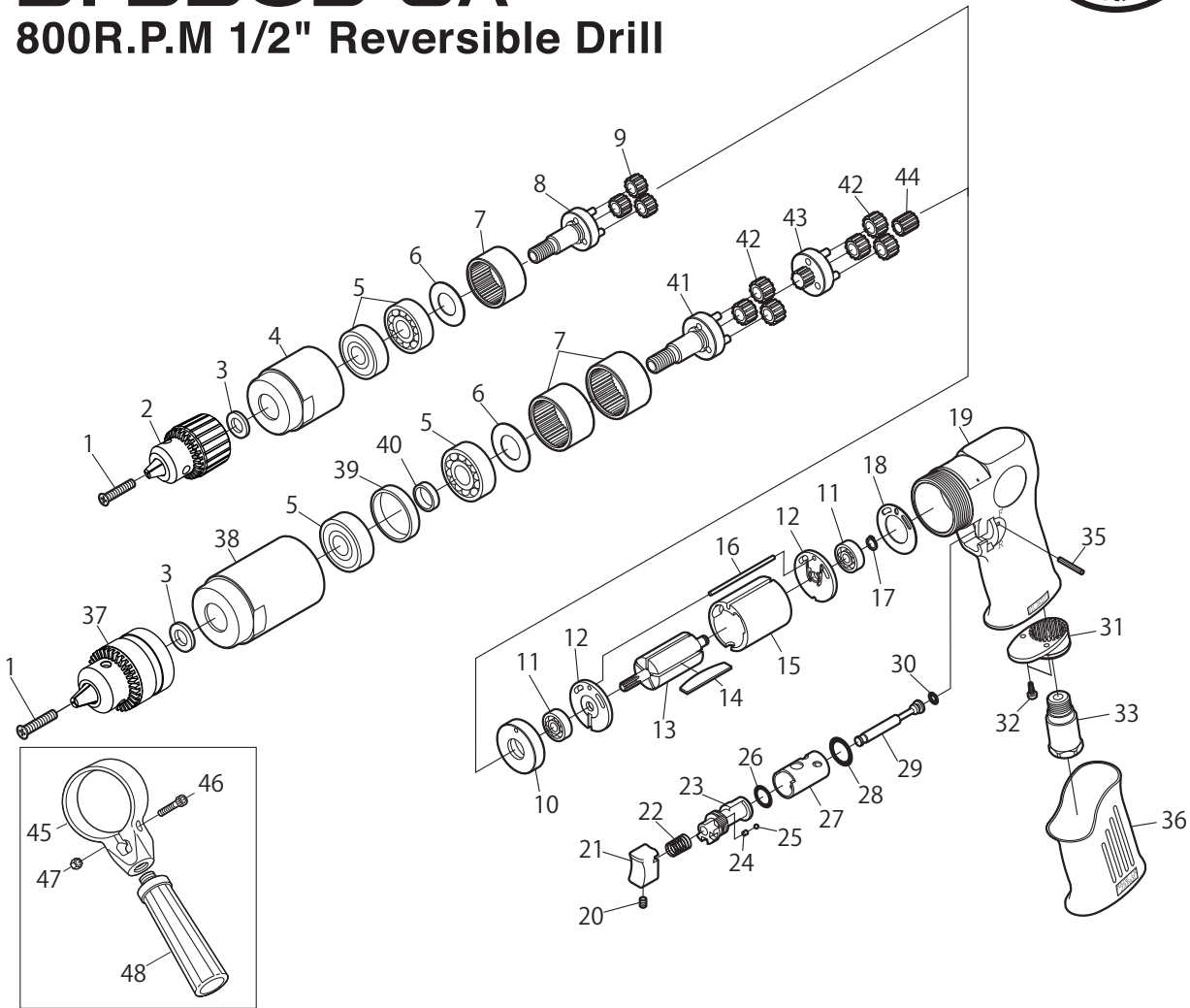


SI-5305A

2000R.P.M 3/8" Reversible Drill

SI-5305-8A

800R.P.M 1/2" Reversible Drill



Ref. No.	Parts No.	Description	Q'ty	Ref. No.	Parts No.	Description	Q'ty
1	215-1	Chuck Screw	1	27	217-6	Reverse Bushing	1
2	KD-004	3/8" Drill Chuck w/Handle KK	1	28	P-14	O-Ring	1
3	680-7	Spacer	1	29	217-3	O-Ring	1
4	215-41	Clamp Nut	1	30	P-4	O-Ring	1
5	6201Z	Ball Bearing	2	31	120-11	Deflector	1
6	957-35	Washer	1	32	JBM30-80	Screw	2
7	217-10A	Internal Gear	1(2)	33	120-17SC	Inlet Bushing incl. Screen (680-28A) & Retainer (CRTW-12)	1
8	215-40	Work Spindle incl. Pins (300-21 x 3)	1	35	25-24	Roll Pin (2.5ø-24mm)	1
9	217-12	Planet Gear incl. Bush (217-33)	3	36	217-45	Housing Cover	1
10	217-18	Spacer	1	★ 37	KD-003A	1/2" Drill Chuck w/Handle KK	1
11	626	Ball Bearing	2	★ 38	215-8-5	Clamp Nut	1
12	217-14	End Plate	2	★ 39	215-8-2	Outer Collar	1
13	217-17	Rotor	1	★ 40	215-8-3	Inner Collar	1
14	350-16	Rotor Blade	5	★ 41	215-8-1	Work Spindle incl. Pins (300-21x 3)	1
15	217-15	Cylinder	1	★ 42	217-8-2	Planet Gear incl. Bush (217-8-3)	6
16	200-34	Cylinder Pin	1	★ 43	217-8-5	Reduction Spindle incl. Pinion & Pins (217-8-6, 300-21x 3)	1
17	JS-6	Retaining Ring	1	★ 44	217-8-4	Pinion Gear	1
18	217-32	Motor Gasket	1	★ 45	210-5-1	Bracket	1
19	217-1A	Motor Housing incl. Housing Cover (217-45)	1	★ 46	Z-M60-200	Cap Screw	1
20	R-M40-60	Set Screw	1	★ 47	N1-M60	Nut	1
21	120-18	Trigger	1	★ 48	240-50	Dead Handle	1
22	120-31	Valve Spring	1	* 49	KK	Chuck Handle for KD-003A & KD-004	1
23	217-5	Reverse Lever	1	*◆ 50	LX10	3/8" Cap. Keyless Chuck (3/8" Thd.)	
24	217-44	Cushion Spring	1	*◆★ 51	LM13W	1/2" Cap. Keyless Chuck (3/8" Thd.)	
25	SB-25	Steel Ball	1				
26	990-26-1	O-Ring	1				