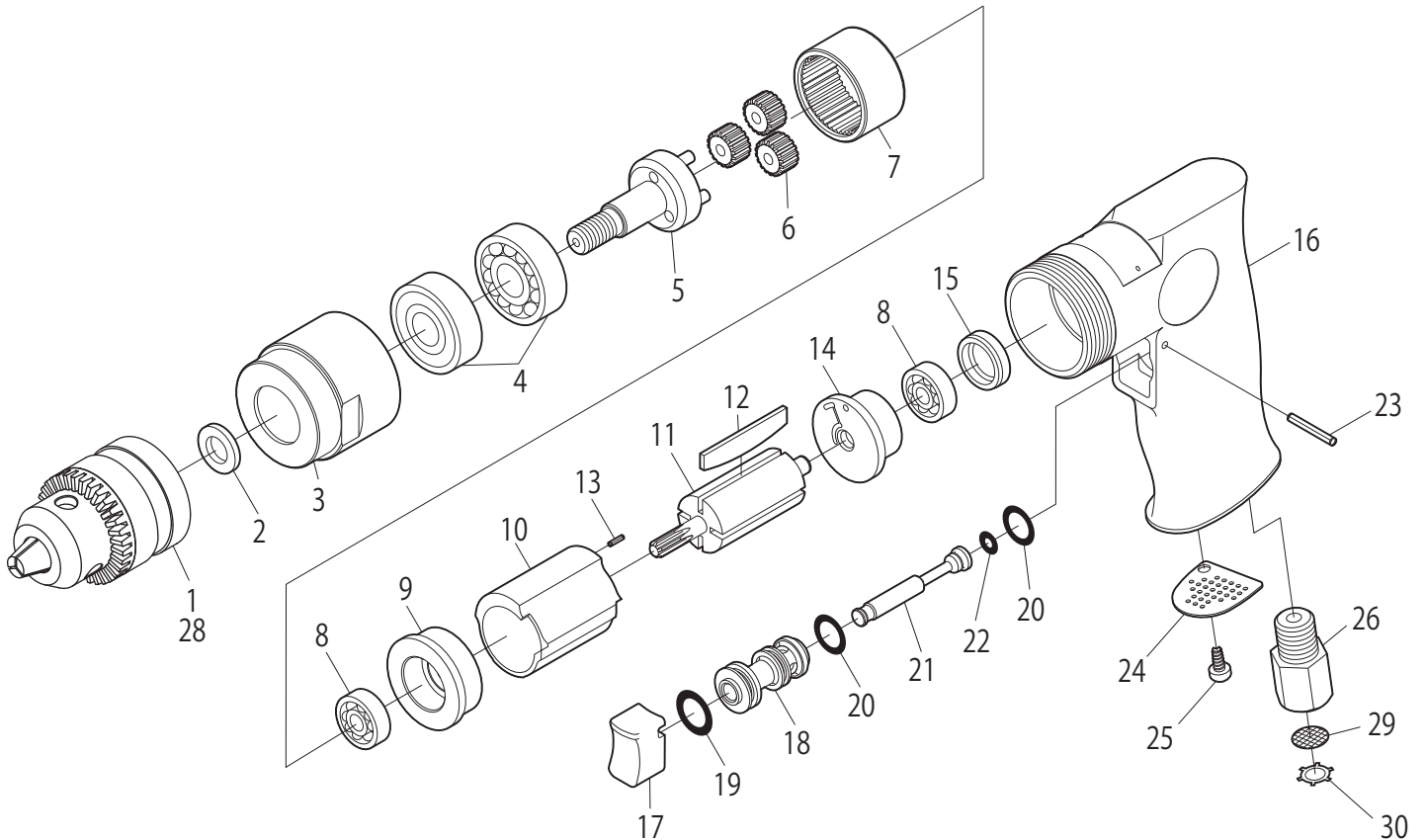


SI-5500

3/8" Drill



Ref. No.	Parts No.	Description	Q'ty	Ref. No.	Parts No.	Description	Q'ty
1	KD-002	3/8" Drill Chuck w/Handle KG1	1	16	210-1SI	Motor Housing incl. Steel Ball (SB-1/4)	1
2	680-7	Spacer	1	17	220-2	Trigger	1
3	210-15	Clamp Nut	1	18	220-31	Valve Body	1
4	6201Z	Ball Bearing	2	19	P-11	O-Ring	1
5	220-10	Planet Cage incl. Pins (300-21x3)	1	20	P-10	O-Ring	2
6	210-8	Planet Gear	3	21	120-14	Valve Stem	1
7	217-10A	Internal Gear	1	22	P-4	O-Ring	1
8	626	Ball Bearing	2	23	25-20	Roll Pin (2.5ø-20mm)	1
9	210-11	Front Plate	1	24	220-6	Deflector	1
10	800-1	Cylinder	1	25	JBM40-80	Screw	1
11	210-13	Rotor	1	26	680-18	Inlet Bushing	1
12	301-15	Rotor Blade	4	* 27	KG1	Chuck Handle for KD-002	1
13	15-6	Roll Pin (1.5ø-6mm)	1	◆ 28	LX10	3/8" Cap, Keyless Chuck (3/8" Thd.)	1
14	300-4	Rear Plate	1	29	680-28A	Screen	1
15	680-34	Bearing Cap	1	30	CRTW-12	Retainer	1