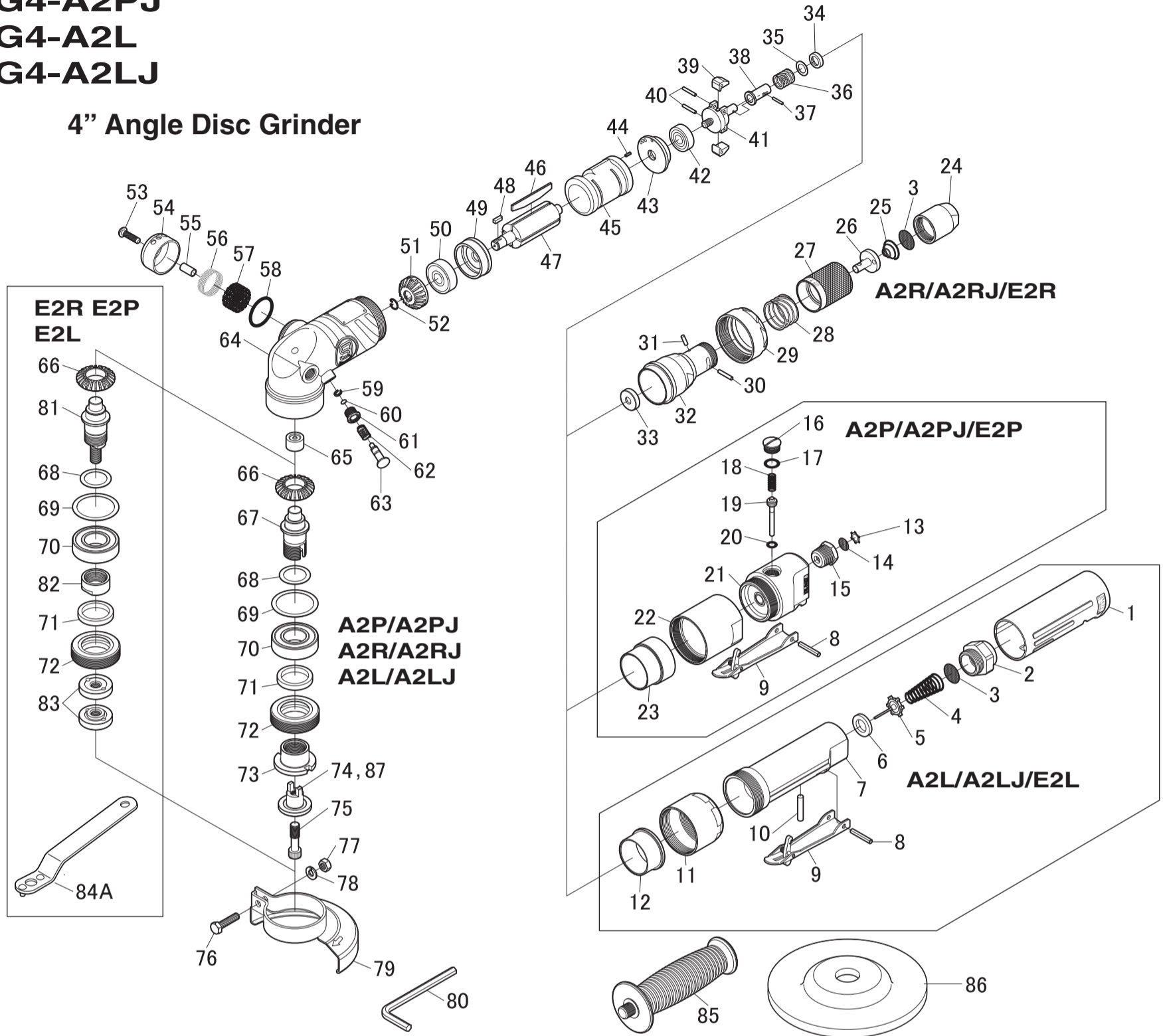


**SI-AG4-A2R**      **SI-AG4-E2R**  
**SI-AG4-A2RJ**    **SI-AG4-E2P**  
**SI-AG4-A2P**      **SI-AG4-E2L**  
**SI-AG4-A2PJ**  
**SI-AG4-A2L**  
**SI-AG4-A2LJ**



**4" Angle Disc Grinder**



Ref. No.	Parts No.	Description	Q'ty	Ref. No.	Parts No.	Description	Q'ty	Ref. No.	Parts No.	Description	Q'ty
<b>AG4-A2L, AG4-A2LJ, AG4-E2L</b>				<b>AG4-A2P, AG4-A2PJ, AG4-A2R, AG4-A2RJ, AG4-A2L, AG4-A2LJ</b>				<b>COMMON PARTS</b>			
1	242SIL-4	Grip Cover	1	66	244-8	Bevel Gear	1	34	242-31	Governor Valve Spring Holder	1
2	242-6	Bushing	1	67	246-3	Spindle(M8-1.25)	1	35A	242-32A	Shim(0.2mm)	★
3	2011AC-9	Screen	1	68A	242-19A	Shim(0.2mm)	★	35B	242-32B	Shim(0.3mm)	
4	242SIL-10	Valve Spring	1	68B	242-19B	Shim(0.3mm)		35C	242-32C	Shim(0.5mm)	
5	966-11	Valve	1	68C	242-19C	Shim(0.5mm)		36	630-19	Governor Spring	1
6	1071C-20	Valve Seat	1	69	244-4	Washer	1	37	242-33	Needle Pin	1
7	244-13	Governor Case incl. Bush (242SIL-11)	1	70	6004ZZNSK	Ball Bearing	1	38	242-29	Governor Valve	1
8	40-25	Roll Pin(4ø-25mm)	1	71	242-18	Felt Ring	1	39	242-27	Governor Weight	2
9	242SIL-7	Throttle Lever	1	72	244-3	Spindle Nut	1	40	2500-15-8	Needle Roller	2
10	242SIL-13	Valve Pin	1	73	244-1	Disc Receiver	1	41	630-17	Governor Housing	1
11	244-15	Lock Ring	1	75	244-5	Cap Screw	1	42	609ZZNSK	Ball Bearing	1
12	244-14	Collar	1	80	WRA-6	6mm Allen Wrench	1	43	630-16A	Rear Plate	1
<b>AG4-A2P, AG4-A2PJ, AG4-E2P</b>				<b>AG4-E2R, AG4-E2P, AG4-E2L</b>							
8	40-25	Roll Pin(4ø-25mm)	1	66	244-8	Bevel Gear	1	44	20-6	Roll Pin(2ø-6mm)	1
9	242SIL-7	Throttle Lever	1	68A	242-19A	Shim(0.2mm)	★	45	630-15	Cylinder	1
13	CRTW-12	Retainer	1	68B	242-19B	Shim(0.3mm)		46	630-13	Rotor Blade	4
14	680-28A	Screen	1	68C	242-19C	Shim(0.5mm)		47	630-14	Rotor	1
15	670-22	Inlet Bushing	1	69	244-4	Washer	1	48	630-11	Key	1
16	230-68	Valve Screw	1	70	6004ZZNSK	Ball Bearing	1	49	630-12A	Front Plate	1
17	P-10	O-Ring	1	71	242-18	Felt Ring	1	50	6200ZZNSK	Ball Bearing	1
18	450-24	Valve Spring	1	72	244-3	Spindle Nut	1	51	244-9	Pinion Gear	1
19	630SIL-6	Valve Pin	1	81	244PL-4	Spindle(3/8-24UNF)	1	52	244-12	Retainer Ring	1
20	P-6	O-Ring	1	82	244PL-5	Spacer	1	53	AZM50---200	Cap Screw	1
21	630SIL-4	Valve Housing incl. Governor Collar (630SIL-5) & Bush (280-67)	1	83	240F-2	Disc Receiver	2	54	246-4	Deflector	1
22	630SIL-2	Lock Ring	1	84A	380-50A	Pin Wrench (3øx20mm)	1	55	242SIL-12	Collar	1
23	630SIL-3	Collar	1	86	240-71E	4" Disc (Disc Hole ø16mm)	1	56	246-15	Exhaust Screen	1
<b>AG4-A2R, AG4-A2RJ, AG4-E2R</b>				<b>AG4-A2PJ, AG4-A2RJ, AG4-A2LJ</b>							
3	2011AC-9	Screen	1	74	244-2	Disc Nut 15mm	1	57	246-11	Muffler	1
24	630-29	Bushing	1	<b>AG4-A2P, AG4-A2R, AG4-A2L</b>				58	P-22	O-Ring	1
25	630-28	Valve Spring	1	86	240-71E	4" Disc (Disc Hole ø16mm)	1	59	2011AC-94A	Retaining Ring	1
26	630-27	Valve	1	87	244-17	Disc Nut 16mm	1	60	2011AC-106	O-Ring	1
27	630-26	Valve Ring	1					61	2011AC-92A	Lock Pin Nut	1
28	630-25	Valve Spring	1					62	2011AC-95A	Spring	1
29	630-24	Motor Lock Nut	1					63	244-16	Lock Pin	1
30	3000-16-8	Needle Roller	1					64	244-10	Motor Housing	1
31	502-32	Pin	1					65	BK1210	Needle Bearing	1
32	630-23	Governor Case	1					76	W-M60--250	Bolt	1
33	630-22	Governor Bush	1					77	N2-M60	Nut	1
								78	HSW-60	Washer	1
								79	244-6	Disc Cover	1
								85	242SIL-20	Anti Vibration Handle	1