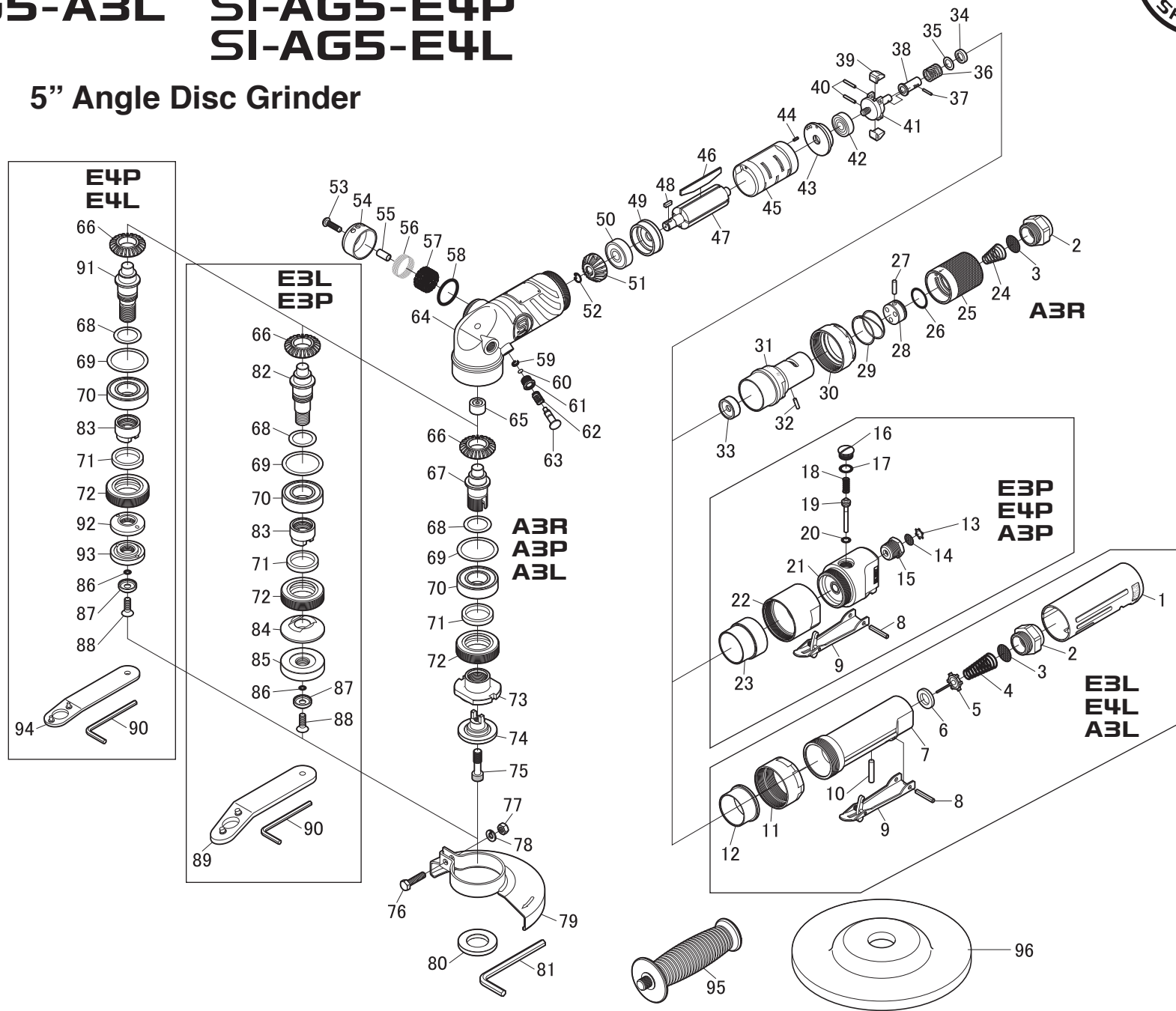


SI-AG5-A3R SI-AG5-E3P
 SI-AG5-A3P SI-AG5-E3L
 SI-AG5-A3L SI-AG5-E4P
 SI-AG5-E4L



5" Angle Disc Grinder



| Ref. No. | Parts No. | Description | Q'ty | Ref. No. | Parts No. | Description | Q'ty | Ref. No. | Parts No. | Description | Q'ty |
|----------------------------------|-----------|--|------|----------------------------------|------------|----------------------|------|---------------------|------------|------------------------------|------|
| AG5-E3L, AG5-E4L, AG5-A3L | | | | AG5-A3R, AG5-A3P, AG5-A3L | | | | COMMON PARTS | | | |
| 1 | 242SIL-4 | Grip Cover | 1 | 66 | 246-5-2 | Bevel Gear | 1 | 34 | 242-31 | Governor Valve Spring Holder | 1 |
| 2 | 242-6 | Bushing | 1 | 67 | 246-3 | Spindle(M8-1.25) | 1 | 35A | 242-32A | Shim(0.2mm) | ★ |
| 3 | 2011AC-9 | Screen | 1 | 68A | 242-19A | Shim(0.2mm) | ★ | 35B | 242-32B | Shim(0.3mm) | |
| 4 | 242SIL-10 | Valve Spring | 1 | 68B | 242-19B | Shim(0.3mm) | | 35C | 242-32C | Shim(0.5mm) | |
| 5 | 966-11 | Valve | 1 | 68C | 242-19C | Shim(0.5mm) | | 36 | 630-19 | Governor Spring | 1 |
| 6 | 1071C-20 | Valve Seat | 1 | 69 | 244-4 | Washer | 1 | 37 | 242-33 | Needle Pin | 1 |
| 7 | 244-13 | Governor Case incl. Bush (242SIL-11) | 1 | 70 | 6004ZZNSK | Ball Bearing | 1 | 38 | 242-29 | Governor Valve | 1 |
| 8 | 40-25 | Roll Pin(4ø-25mm) | 1 | 71 | 242-18 | Felt Ring | 1 | 39 | 242-27 | Governor Weight | 2 |
| 9 | 242SIL-7 | Throttle Lever | 1 | 72 | 244-3 | Spindle Nut | 1 | 40 | 2500-15-8 | Needle Roller | 2 |
| 10 | 242SIL-13 | Valve Pin | 1 | 73 | 246-5-4 | Disc Receiver | 1 | 41 | 630-17 | Governor Housing | 1 |
| 11 | 246-14 | Lock Ring | 1 | 74 | 246-5-5 | Disc Nut | 1 | 42 | 609ZZNSK | Ball Bearing | 1 |
| 12 | 244-14 | Collar | 1 | 75 | 244-5 | Cap Screw | 1 | 43 | 630-16A | Rear Plate | 1 |
| AG5-E3P, AG5-E4P, AG5-A3P | | | | 80 | 242SIL-23 | Cut Off Attachment | 1 | 44 | 20-6 | Roll Pin(2ø-6mm) | 1 |
| 8 | 40-25 | Roll Pin(4ø-25mm) | 1 | 81 | WRA-6 | 6mm Allen Wrench | 1 | 45 | 246-6B | Cylinder | 1 |
| 9 | 242SIL-7 | Throttle Lever | 1 | AG5-E3L, AG5-E3P | | | | 46 | 246-8 | Rotor Blade | 4 |
| 13 | CRTW-12 | Retainer | 1 | 66 | 246-5-2 | Bevel Gear | 1 | 47 | 246-7 | Rotor | 1 |
| 14 | 680-28A | Screen | 1 | 68A | 242-19A | Shim(0.2mm) | ★ | 48 | 630-11 | Key | 1 |
| 15 | 670-22 | Inlet Bushing | 1 | 68B | 242-19B | Shim(0.3mm) | | 49 | 630-12A | Front Plate | 1 |
| 16 | 230-68 | Valve Screw | 1 | 68C | 242-19C | Shim(0.5mm) | | 50 | 6200ZZNSK | Ball Bearing | 1 |
| 17 | P-10 | O-Ring | 1 | 69 | 244-4 | Washer | 1 | 51 | 246-5-3 | Pinion Gear | 1 |
| 18 | 450-24 | Valve Spring | 1 | 70 | 6004ZZNSK | Ball Bearing | 1 | 52 | 244-12 | Retainer Ring | 1 |
| 19 | 630SIL-6 | Valve Pin | 1 | 71 | 242-18 | Felt Ring | 1 | 53 | AZM50--200 | Cap Screw | 1 |
| 20 | P-6 | O-Ring | 1 | 72 | 244-3 | Spindle Nut | 1 | 54 | 246-4 | Deflector | 1 |
| 21 | 630SIL-4 | Valve Housing incl. Governor Collar (630SIL-5) & Bush (280-67) | 1 | 82 | 246PL-4 | Spindle(M14-2) | 1 | 55 | 242SIL-12 | Collar | 1 |
| 22 | 246-2 | Lock Ring | 1 | 83 | 246PL-3 | Disc Receiver | 1 | 56 | 246-15 | Exhaust Screen | 1 |
| 23 | 630SIL-3 | Collar | 1 | 84 | 241-14-1C | Disc Receiver | 1 | 57 | 246-11 | Muffler | 1 |
| AG5-A3R | | | | 85 | 241-14-2A | Disc Nut | 1 | 58 | P-22 | O-Ring | 1 |
| 2 | 242-6 | Bushing | 1 | 86 | 2011AC-56 | O-Ring | 1 | 59 | 2011AC-94A | Retaining Ring | 1 |
| 3 | 2011AC-9 | Screen | 1 | 87 | 2011AC-55A | Washer | 1 | 60 | 2011AC-106 | O-Ring | 1 |
| 24 | 242-36 | Throttle Valve Spring | 1 | 88 | Y-M60--180 | Counter Sink | 1 | 61 | 2011AC-92A | Lock Pin Nut | 1 |
| 25 | 246-10 | Valve Ring | 1 | 89 | 510-2 | Pin Wrench (5øx30mm) | 1 | 62 | 2011AC-95A | Spring | 1 |
| 26 | S-20 | O-Ring | 1 | 90 | WRA-4 | 4mm Allen Wrench | 1 | 63 | 244-16 | Lock Pin | 1 |
| 27 | 242-38 | Roll Pin | 1 | AG5-E4P, AG5-E4L | | | | 64 | 246-1 | Motor Housing | 1 |
| 28 | 242-34 | Throttle Valve | 1 | 66 | 246-5-2 | Bevel Gear | 1 | 65 | BK1210 | Needle Bearing | 1 |
| 29 | 242-35 | Throttle Valve Handle Spring | 1 | 68A | 242-19A | Shim(0.2mm) | ★ | 76 | W-M60--250 | Bolt | 1 |
| 30 | 630-24 | Motor Lock Nut | 1 | 68B | 242-19B | Shim(0.3mm) | | 77 | N2-M60 | Nut | 1 |
| 31 | 246-5 | Governor Case | 1 | 68C | 242-19C | Shim(0.5mm) | | 78 | HSW-60 | Washer | 1 |
| 32 | 310-19 | Planet Pin | 1 | 69 | 244-4 | Washer | 1 | 79 | 246-5-7 | Disc Cover | 1 |
| 33 | 246-5A | Governor Bush | 1 | 70 | 6004ZZNSK | Ball Bearing | 1 | 95 | 242SIL-20 | Anti Vibration Handle | 1 |
| | | | | 71 | 242-18 | Felt Ring | 1 | 96 | 241-49E | 5" Disc | 1 |
| | | | | 72 | 244-3 | Spindle Nut | 1 | | | | |
| | | | | 83 | 246PL-3 | Disc Receiver | 1 | | | | |
| | | | | 86 | 2011AC-56 | O-Ring | 1 | | | | |
| | | | | 87 | 2011AC-55A | Washer | 1 | | | | |
| | | | | 88 | Y-M60--180 | Counter Sink | 1 | | | | |
| | | | | 90 | WRA-4 | 4mm Allen Wrench | 1 | | | | |
| | | | | 91 | 246-5-8 | Spindle(5/8-11UNC) | 1 | | | | |
| | | | | 92 | 240B-4 | Disc Receiver | 1 | | | | |
| | | | | 93 | 240B-5 | Disc Nut | 1 | | | | |
| | | | | 94 | 240B-7 | Pin Wrench 5/8" | 1 | | | | |