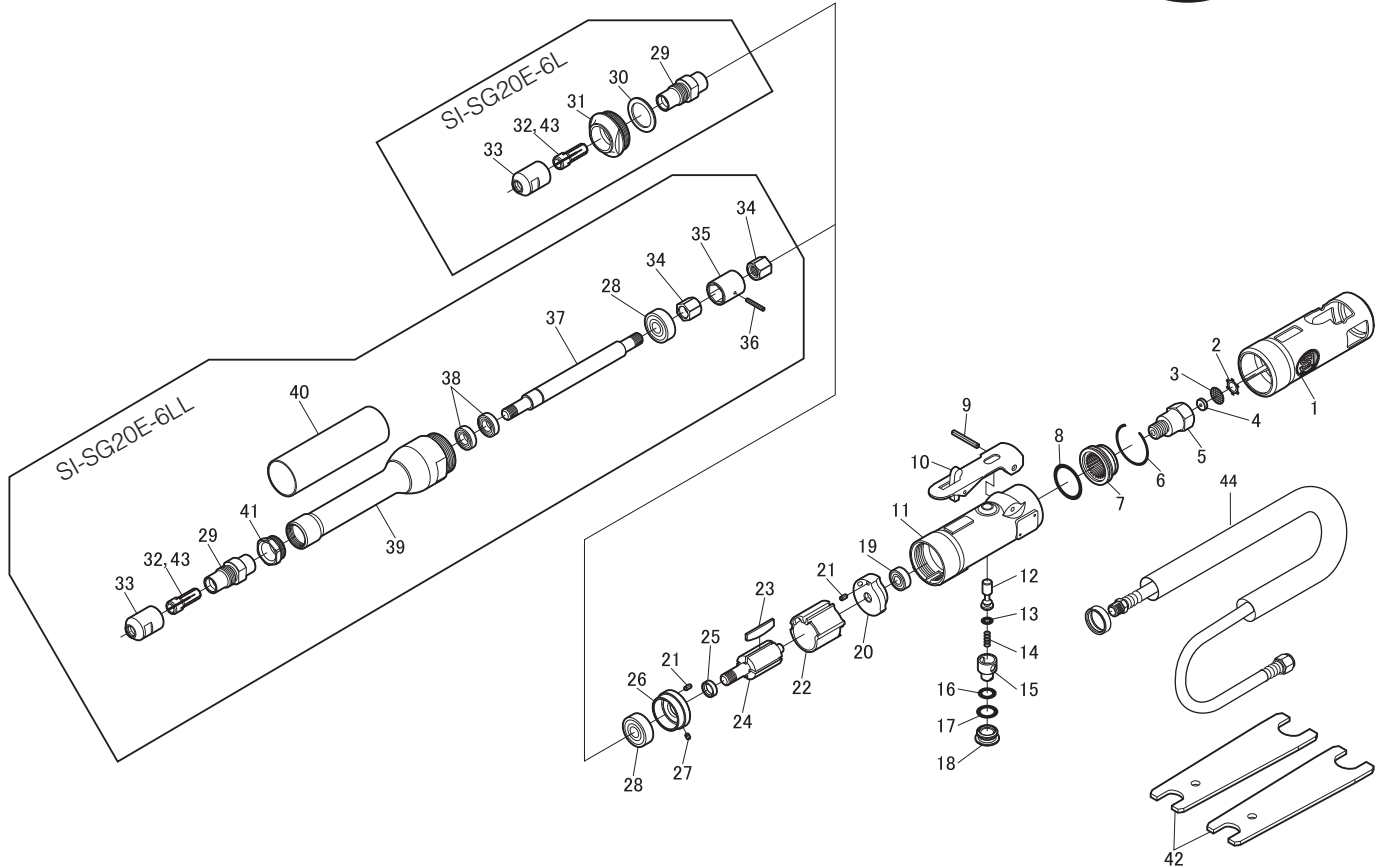


SI-SG20E-6L Die Grinder

SI-SG20E-6LL Extended Die Grinder



Ref. No.	Parts No.	Description	Q'ty	Ref. No.	Parts No.	Description	Q'ty
COMMON PARTS				SG20E-6L			
1	114SE-6	Housing Cover	1	29	612SE-1	Spindle	1
2	CRTW-12	Retainer	1	30	610-25	Washer	1
3	680-28A	Screen	1	31	612SE-2	Lock Nut	1
4	610B-2	Air Restrictor	1	32	114SE-3	6mm Collet	1
5	610-2	Inlet Bushing	1	33	114SE-2	Collet Nut	1
6	610-30	Retaining Ring	1	SG20E-6LL			
7	610-29	Deflector	1	28	608ZZ	Ball Bearing	1
8	S-22.4	O-Ring	1	29	612SE-1	Spindle	1
9	30-24	Roll Pin(3Ø-24mm)	1	32	114SE-3	6mm Collet	1
10	350-2L	Throttle Lever	1	33	114SE-2	Collet Nut	1
11	612-1	Motor Housing incl. Bush (330-4)	1	34	612LSE-6	Coupling Nut	2
12	330-5	Valve Stem	1	35	612LSE-5	Coupling	1
13	P-4	O-Ring	1	36	20-16	Roll Pin(2Ø-16mm)	1
14	350-7	Valve Spring	1	37	612LSE-3	Extension Shaft	1
15	330-8	Air Regulator	1	38	688ZZ	Ball Bearing	2
16	P-8	O-Ring	1	39	612LSE-2	Extension Housing	1
17	P-10	O-Ring	1	40	612LSE-4	Extension Cover	1
18	330-10	Valve Screw	1	41	612LSE-1	Spindle Lock Nut	1
19	696ZZ	Ball Bearing	1	OPTION			
20	610S-2	Rear Plate	1	43	114SE-3A	1/4 Collet	1
21	25-5	Roll Pin(2.5Ø-5mm)	2				
22	330-30B	Cylinder	1				
23	330-16	Rotor Blade	4				
24	330-15	Rotor	1				
25	330-18	Collar	1				
26	610S-1	Front Plate	1				
27	25-3.5	Roll Pin(2.5Ø-3.5mm)	1				
28	608ZZ	Ball Bearing	1				
42	350-28	Spanner Wrench (14x19mm)	2				
44	106-9MAS	Wipe Hose M Assy	1				