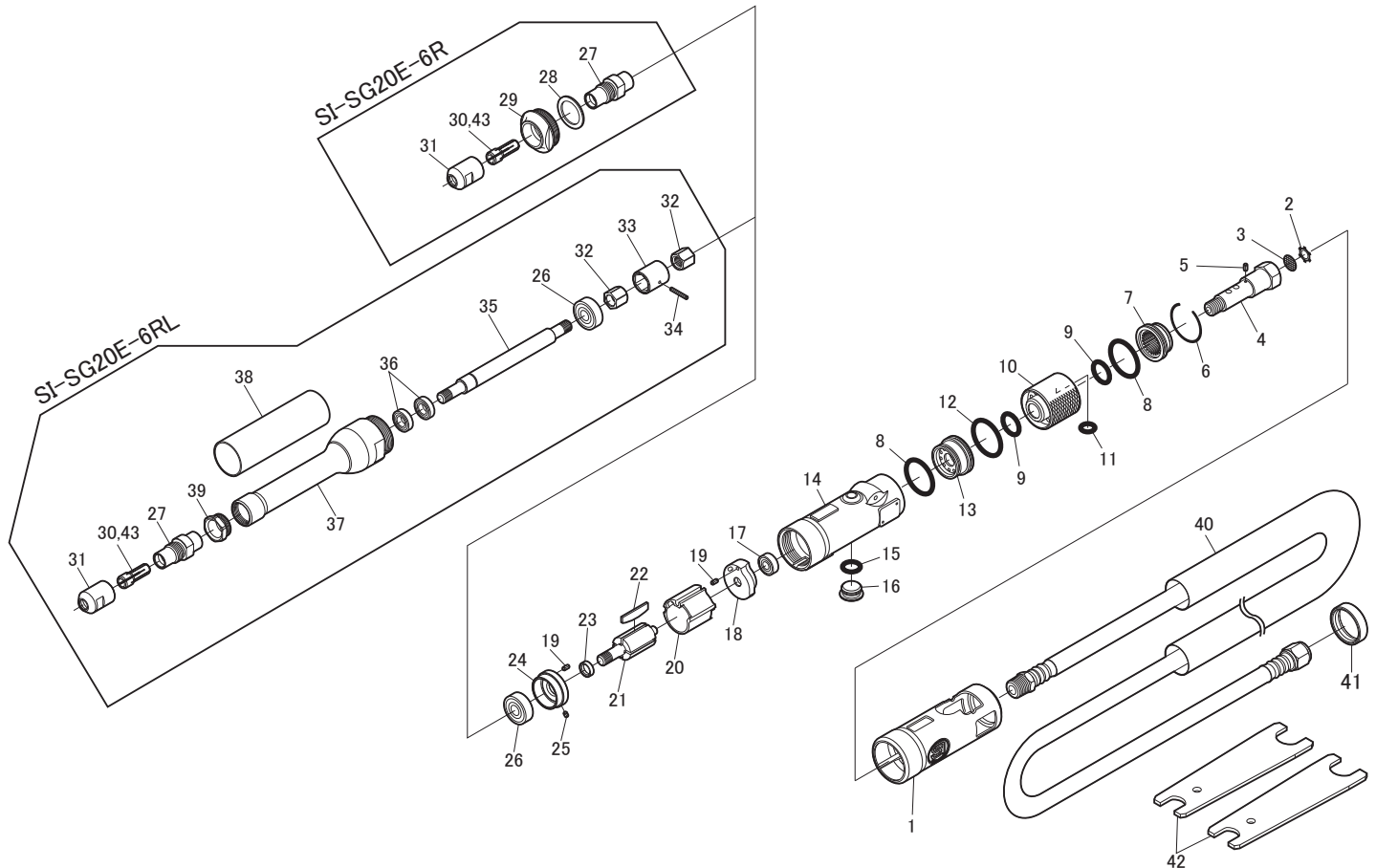


SI-SG20E-6R Die Grinder

SI-SG20E-6RL Extended Die Grinder



Ref. No	Parts No.	Description	Q'ty	Ref. No	Parts No.	Description	Q'ty
COMMON PARTS				SI-SG20E-6R			
1	114SE-6	Housing Cover	1	27	612SE-1	Spindle	1
2	CRTW-12	Retainer	1	28	610-25	Washer	1
3	680-28A	Screen	1	29	612SE-2	Lock Nut	1
4	612SE-9	Inlet Bushing	1	30	114SE-3	6mm Collet	1
5	15-4	Roll Pin(1.5ø-4mm)	1	31	114SE-2	Collet Nut	1
6	610-30	Retaining Ring	1	SI-SG20E-6RL			
7	610-29	Deflector	1	27	612SE-1	Spindle	1
8	620-28	O-Ring	2	30	114SE-3	6mm Collet	1
9	S-12	O-Ring	2	31	114SE-2	Collet Nut	1
10	612SE-8AS	Valve Ring incl. Valve Bush (612SE-8A)	1	32	612LSE-6	Coupling Nut	2
11	612SE-10	O-Ring	1	33	612LSE-5	Coupling	1
12	210R-7	O-Ring	1	34	20-16	Roll Pin(2ø-16mm)	1
13	612SE-7	Collar	1	35	612LSE-3	Extension Shaft	1
14	612SE-11	Motor Housing incl.Bush (330-4A)	1	36	688ZZ	Ball Bearing	2
15	P-10	O-Ring	1	37	612LSE-2	Extension Housing	1
16	330-10A	Valve Nut	1	38	612LSE-4	Extension Cover	1
17	696ZZ	Ball Bearing	1	39	612LSE-1	Spindle Lock Nut	1
18	610S-2	Rear Plate	1	OPTION			
19	25-5	Roll Pin(2.5ø-5mm)	2	43	114SE-3A	1/4" Collet	
20	330-30B	Cylinder	1				
21	330-15	Rotor	1				
22	330-16	Rotor Blade	4				
23	330-18	Collar	1				
24	610S-1	Front Plate	1				
25	25-3.5	Roll Pin(2.5ø-3.5mm)	1				
26	608ZZ	Ball Bearing	1				
40	106-9MAS	Wipe Hose M Assy	1				
41	106-8	Urethane Band S	1				
42	350-28	Spanner Wrench (14 x 19mm)	2				