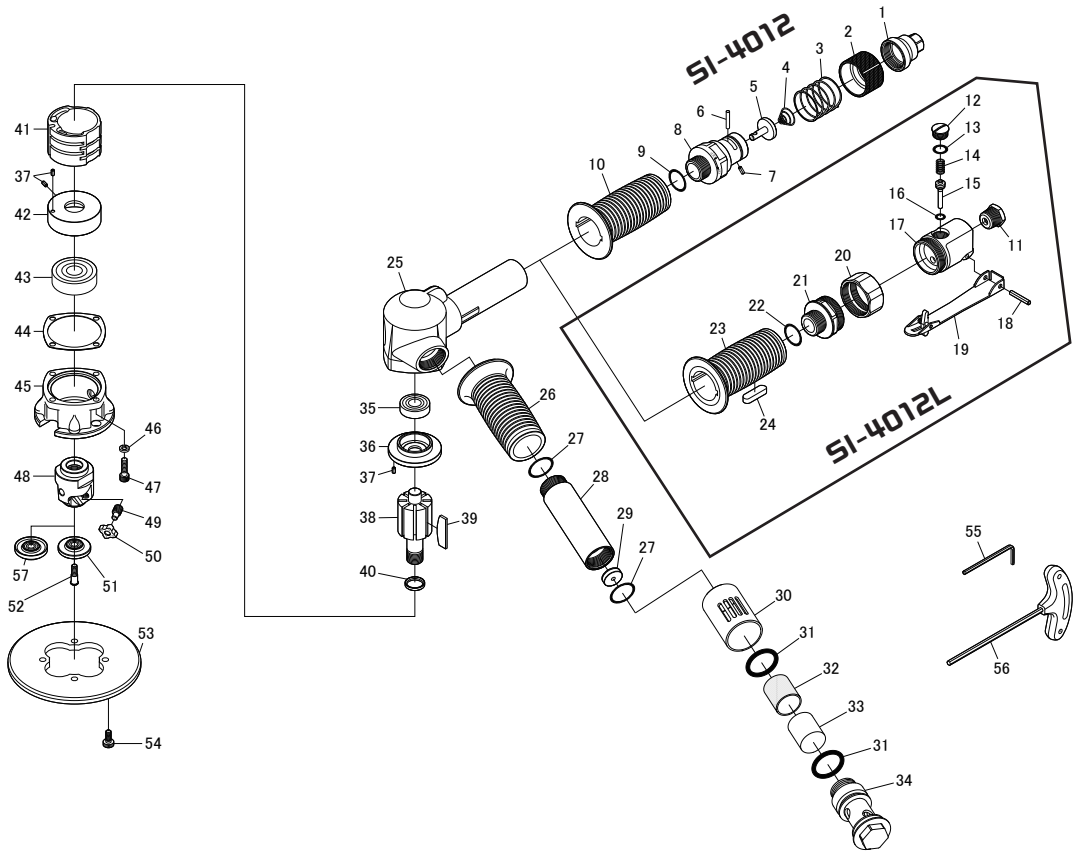


# SI-4012 SI-4012L Beveler



Ref. No.	Parts No.	Description	Q'ty	Ref. No.	Parts No.	Description	Q'ty
SI-4012				28	693-23A	Handle	1
1	245-29	Inlet Bushing	1	29	692-11	Air Restrictor	1
2	245-26	Valve Ring	1	30	693-55	Exhaust Ring	1
3	245-27	Valve Ring Spring	1	31	P-26	O-Ring	2
4	380-33	Conical Spring	1	32	693-60	Muffler	1
5	245-5	Valve	1	33	693-59	Exhaust Screen	1
6	940-19	Valve Pin	1	34	693-54	Exhaust Bushing	1
7	30-8	Roll Pin(3φ-8mm)	1	35	6001ZZ	Ball Bearing	1
8	693-1	Valve Housing	1	36	692-3	Rear Plate	1
9	991-7	O-Ring	1	37	30-6	Roll Pin(3φ-6mm)	3
10	693-21	Handle Cover	1	38	692-2A	Rotor	1
SI-4012L				39	692-8	Rotor Blade	8
11	670-22	Inlet Bushing	1	40	692-10	Collar	1
12	230-68	Valve Screw	1	41	692-7	Cylinder	1
13	P-10	O-Ring	1	42	692-4	Front Plate	1
14	230-4	Valve Spring	1	43	6302ZZ	Ball Bearing	1
15	230-6	Valve Stem	1	44	692-9	Motor Gasket	1
16	P-6	O-Ring	1	45	692-5B	Outer Case	1
17	693L-4	Valve Housing incl. Bush (230-7)	1	46	HSW-50	Washer	4
18	40-25	Roll Pin(4φ-25mm)	1	47	Z-M50--180	Cap Screw	4
19	1110RAL-2	Safety Lever	1	48	692-6A	Cutter Holder	1
20	693L-2	Lock Ring	1	49	693-15	Clamp Screw	3
21	693L-1	Valve Joint	1	50	693-171	R3 Carbide Tip - 10pcs in 1box-	3
22	991-7	O-Ring	1	51	693-5E	Guide Roller for thickness ≥ 8mm	1
23	693L-3	Handle Cover	1	52	693-19	Screw	1
24	693L-5	Toggle Lock	1	53	692-30B	Base Plate	1
Common Parts				54	LVM50--120	Cap Screw	4
25	692-1	Motor Housing incl. Heli-coil (M5-2D)	1	55	WRA-3	3mm Allen Wrench	1
26	693-21	Handle Cover	1	56	WRA-4LB	Allen Wrench T Type	1
27	620-28	O-Ring	2	★ 57	693-5	Guide Roller for thickness ≥ 6mm	1