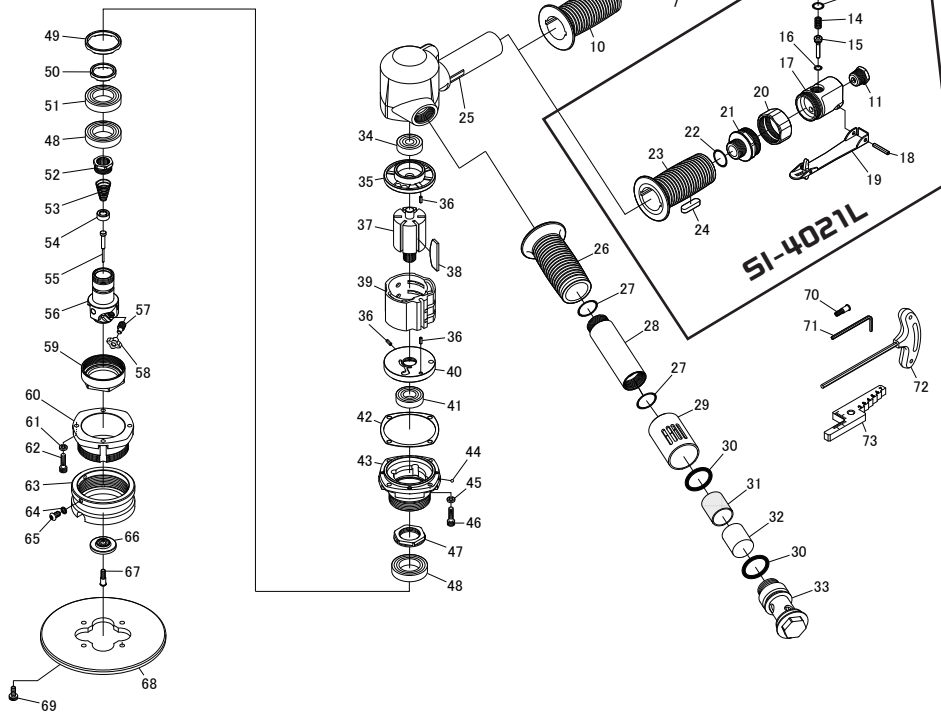


SI-4021 SI-4021L Beveler C2-C7



Ref. No.	Parts No.	Description	Q'ty	Ref. No.	Parts No.	Description	Q'ty
SI-4021				36	30-8	Roll Pin(3φ8mm)	3
1	245-29	Inlet Bushing	1	37	693-30	Rotor	1
2	245-26	Valve Ring	1	38	930B-3	Rotor Blade	6
3	245-27	Valve Ring Spring	1	39	691-4	Cylinder	1
4	380-33	Conical Spring	1	40	693-3B	Front Plate	1
5	245-5	Valve	1	41	16002	Ball Bearing	1
6	940-19	Valve Pin	1	42	693-27	Motor Gasket	1
7	30-8	Roll Pin(3φ-8mm)	1	43	693-8B	Spindle Housing	1
8	693-1	Valve Housing	1	44	SB-1/8	Steel Ball	1
9	991-7	O-Ring	1	45	HSW-50	Washer	4
10	693-21	Handle Cover	1	46	Z-M50--180	Cap Screw	4
SI-4021L				47	693-35	Lock Nut	1
11	670-22	Inlet Bushing	1	48	6905ZZ	Ball Bearing	2
12	230-68	Valve Screw	1	49	693-13B	Collar	1
13	P-10	O-Ring	1	50	693-12B	Collar	1
14	230-4	Valve Spring	1	51	6905LLU	Ball Bearing	1
15	230-6	Valve Stem	1	52	693-4	Coupling	1
16	P-6	O-Ring	1	53	693-53	Valve Spring	1
17	693L-4	Valve Housing incl. Bush (230-7)	1	54	693-56	Valve	1
18	40-25	Roll Pin(4φ-25mm)	1	55	693-52	Valve Pin	1
19	1110RAL-2	Safety Lever	1	56	693-24B	Cutter Holder	1
20	693L-2	Lock Ring	1	57	693-15	Clamp Screw	3
21	693L-1	Valve Joint	1	58	693-100C	Carbide Tip - 10pcs. in 1 box -	3
22	991-7	O-Ring	1	59	693-6	Lock Nut	1
23	693L-3	Handle Cover	1	60	693-46	Outer Case	1
24	693L-5	Toggle Lock	1	61	HSW-50	Washer	4
Common Parts				62	Z-M50--150	Cap Screw	4
25	693-20	Motor Housing incl. Heli-coil (M5-2D)	1	63	693-47	Slide Ring	1
26	693-21	Handle Cover	1	64	P-5	O-Ring	2
27	620-28	O-Ring	2	65	AZM50--100	Screw	2
28	693-23A	Handle	1	66	693-5EC8	Guide Roller for thickness ≥ 13mm	1
29	693-55	Exhaust Ring	1	67	693-19	Screw	1
30	P-26	O-Ring	2	68	693-14B	Base Plate	1
31	693-60	Muffler	1	69	LVM50--120	Cap Screw	4
32	693-59	Exhaust Screen	1	70	693-19A	Stopbolt for cooling air	1
33	693-54	Exhaust Bushing	1	71	WRA-3	3mm Allen Wrench	1
34	6200ZZ	Ball Bearing	1	72	WRA-4LB	Allen Wrench T Type	1
35	693-2A	Rear Plate	1	73	693-99	Adjustment tool	1