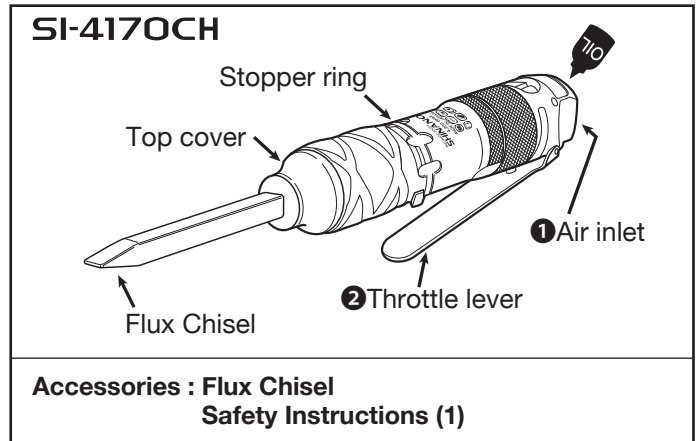
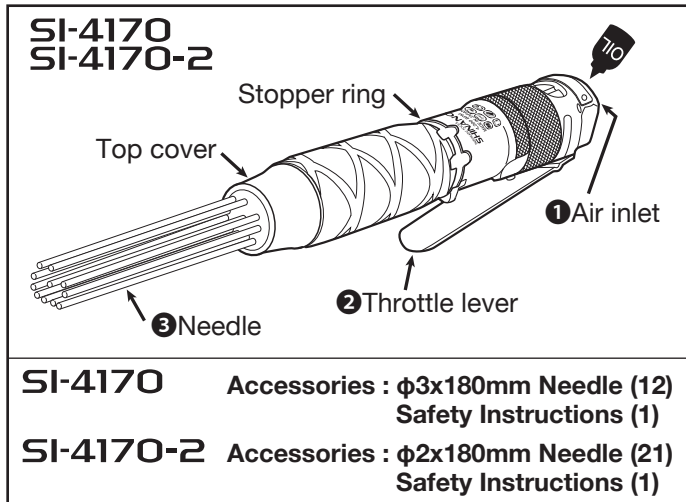


INSTRUCTION MANUAL FOR NEEDLE SCALER / FLUX CHIPPER

Operation Procedures

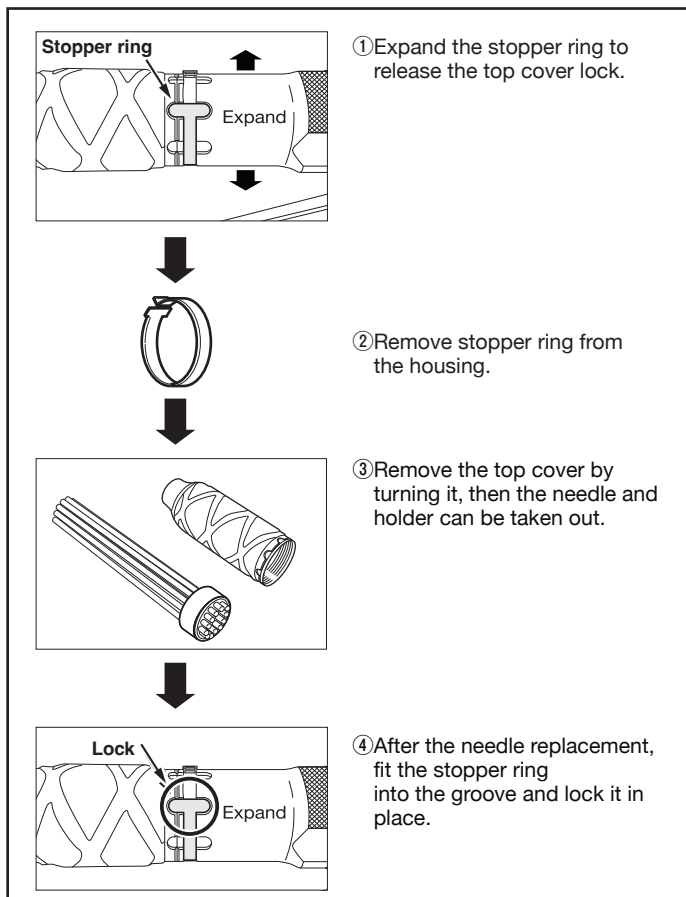
1. Connect the coupler to the air inlet ① on the rear side of the tool.
2. Pour approx. 0.5cc (2 to 3 drops) of the oil through the coupler. Connect it to the air hose, and run for 3 to 5 seconds to circulate the oil.

3. Some rebounds will occur during operation. Firmly retain the tool in both hands, slowly pull the throttle lever ②, and start the operation.
4. Release the throttle lever to stop the operation.

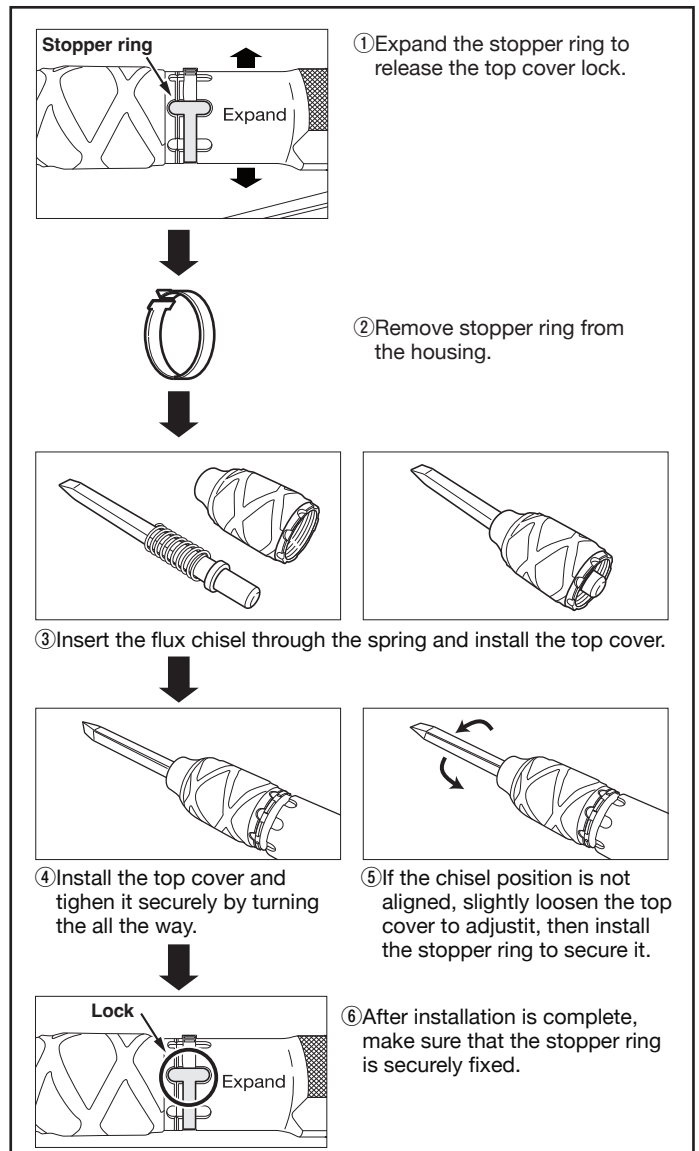


How to replace the needle

- When the tip of the needle is damaged or bent, replace the needle ③.



How to attach the flux chisel



For replacement of the needle or flux chisel, be sure to remove the air hose.

SI-4170 SI-4170-2 / SI-4170CH

Model Number	Stroke Length mm	Free Blow Speed spm	Weight kg/(lb)	Noise Level dBA(power)	Vibration m/s ²	Avg. Air Consumption CFM
SI-4170	12	4,200	1.24 / (2.73)	90 / (101)	14.5 / 1.9	0.8
SI-4170-2	12	4,200	1.21 / (2.66)	90 / (101)	14.5 / 1.9	0.8
SI-4170CH	12	4,200	1.00 / (2.20)	95 / (106)	16.2 / 2.1	0.8

Noise levels according to ISO 15744 Vibration level to ISO 8662

WARNING

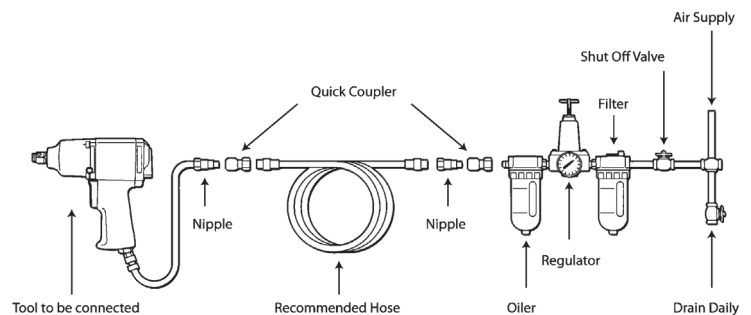
- Use the needle of our original product.
- Before operation, check if the claw of the safety lock ring is firmly locked in the groove of the top cover.
- Avoid using the tool, exceeding the specification, or forced services exceeding the capability.
- Vibration is inevitable. Therefore, avoid continuous works for long time.
- Wear the safety goggles during operation. In addition, be sure to wear on thee safety mask for the operation, because dust powder occurs.

CAUTION

- Operate the tool within the air pressure of 0.63MPa (6.5kg/cm²). If operated in high pressure, the maximum allowance speed will be exceeded, which may result in damage of components.
- Before or after daily use, lubricate a few drops of air tool oil from the hose attached port.
- The compressed air containing dust or/and moisture will result in damage of tool. Be sure to operate the tool with air through the drainage and air filter.
- Regarding to this product, if inconvenient claims or troubles occurred, contact the product distributor.

AIR SUPPLY

Pressure at the working	0.63MPa (90PSI 6.3bar)
Max Hose Length	10m (30ft)
Lubrication	Daily Lubricating oil



 **SHINANO INC.**

<https://shinanoinc.com>

MADE IN JAPAN