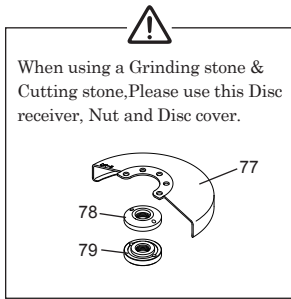
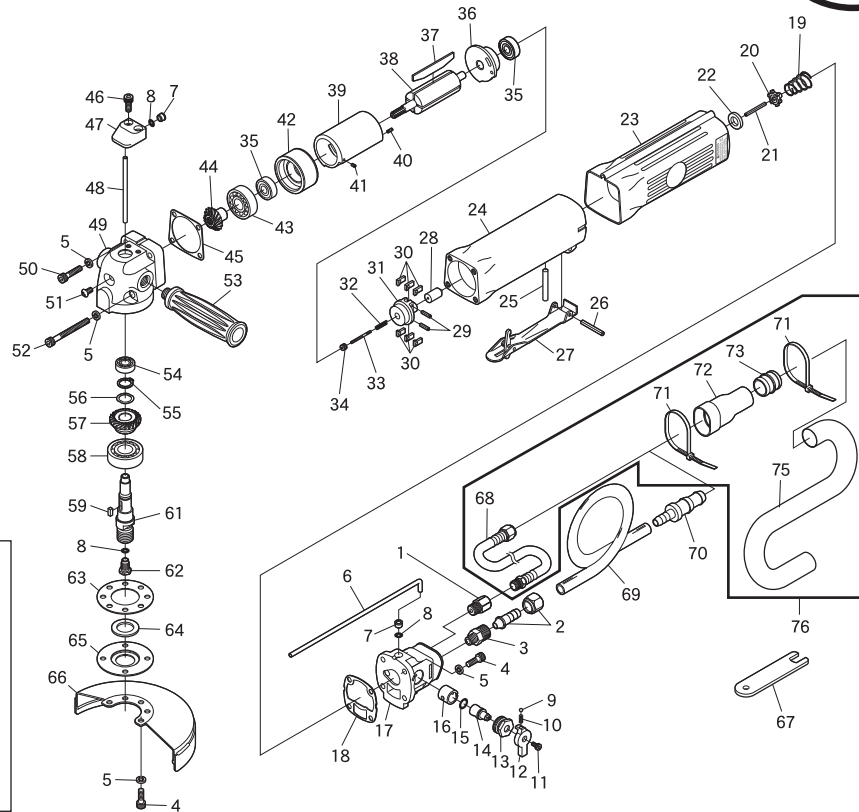


SI-2515WE

14mm Wet Air Grinder



Ref. No.	Parts No.	Description	Q'ty	Ref. No.	Parts No.	Description	Q'ty
1	180-1	Inlet Bushing	1	40	25-6	Roll Pin(2.5ø-6mm)	1
2	1110A-62	Hose Nipple	1	41	25-4	Roll Pin(2.5ø-4mm)	1
3	1110A-22	Hose Adaptor	1	42	240RL-8	Front Plate	1
4	Z-M50--150	Cap Screw	8	43	6201	Ball Bearing	1
5	HSW-50	Washer	12	44	241RW-13	Pinion Gear	1
6	241RW-7	Outer Pipe	1	45	241RW-17	Gasket	1
7	1110-17	Pipe Bush	2	46	Z-M50--120	Cap Screw	2
8	P-4	O-Ring	3	47	241RW-6	Pipe Connector	1
9	SB-1/8	Steel Ball	1	48	241RW-8	Inner Pipe	1
10	241RW-21	Spring	1	49	241RW-2	Angle Head	1
11	Z-M30---80	Cap Screw	1	50	Z-M50--220	Cap Screw	2
12	1110-4	Lever	1	51	F-M60--80	Screw	1
13	1110-21	Valve Nut	1	52	Z-M50--500	Cap Screw	2
14	1110A-19	Water Valve	1	53	240B-2	Handle	1
15	S-8	O-Ring	1	54	698	Ball Bearing	1
16	241RW-16	Valve Bush	1	55	JS-12	Retaining Ring	1
17	241RW-3	Valve Housing	1	56	WW-120	Wave Washer	1
18	241RW-18	Gasket	1	57	241RW-12	Bevel Gear	1
19	960-32	Valve Spring	1	58	6202-LU	Ball Bearing	1
20	960-35	Valve	1	59	940-46	Key	1
21	30-28	Roll Pin(3ø-28mm)	1	61	241RW-19	Spindle M-14	1
22	960-34	Valve Seat	1	62	1110A-16	Nozzle	1
23	241RW-4	Housing Cover	1	63	240-5	Gasket	1
24	241RW-1	Motor Housing	1	64	241RW-10	Felt Seal	1
25	241RW-20	Valve Pin	1	65	241RW-9	Retainer	1
26	40-30	Roll Pin(4ø-30mm)	1	66	241RW-5	Disc Cover	1
27	240-68	Throttle Lever	1	67	380-51	Spanner Wrench (10mm)	1
28	240-31	Plunger	1	68	106-3	Wipe Hose	1
29	30-12	Roll Pin(3ø-12mm)	2	69	1110A-64	Water Hose	1
30	240-30	Pendulum	6	70	1110A-61	Water Hose Joint	1
31	240-29	Governor	1	71	106-10	Harness Band	2
32	240-34	Governor Spring	1	72	106-5	Exhaust Cover A	1
33	240-32	Adjust Screw	1	73	106-6	Connector	1
34	240-33	Adjust Nut	1	75	106-2	Exhaust Hose	1
35	608-ZZ	Ball Bearing	2	76	106-A	Wipe Hose Assy (106-1, 2, 3, 5, 6 & 10)	
36	240RL-9	Rear Plate	1	◆77	241-5	Disc Cover	
37	650-13	Rotor Blade	4	◆78	241RW-24	Disc Receiver	
38	240-23	Rotor	1	◆79	241RW-25	Disc Nut	
39	241RW-14	Cylinder	1				